

# User Manual

## **USB2.0 External Drive**



P/N : X210-1047

## **FCC COMPLIANCE STATEMENTS**

This equipment has been tested and found to comply with the limits for a Class B digital device, pursuant to Part 15 of the FCC Rules. These limits are designed to provide reasonable protection against harmful interference in a residential installation. This equipment generates, uses and can radiate radio frequency energy and, if not installed and used in accordance with the instructions, there is no guarantee that interference will not occur in a particular installation. If this equipment does cause harmful interference to equipment off and on, the user is encouraged to try to correct the interference by one or more of the following measures:

Reorient or relocate the receiving antenna.

Increase the Distance between the equipment and receiver.

Connect the equipment into an outlet on a circuit different from that to which the receiver is connected.

Consult the dealer or an experienced radio/TV technician for help.

## **TRADEMARKS**

MS-DOS, Windows, Windows 95/98/NT/2000/Me/XP are trademarks of Microsoft Corporation.

Macintosh and Mac are trademarks of Apple Computer

\*All of the third-party brands and names are the property of their respective owners.

**CONTENTS**

**1. INTRODUCTION..... 1**

**2. SYSTEM REQUIREMENTS..... 2**

**3. HARDWARE INSTALLATION..... 2**

**4. DRIVERS INSTALLATION..... 3**

**4.1 WINDOWS 98SE ..... 3**

**4.2 WINDOWS ME/2000/XP..... 6**

**4.3 Mac OS..... 7**

**5. USING THE USB2.0 EXTERNAL DRIVE..... 8**

**5.1 Connect the USB2.0 External Drive to computer.....8**

**5.2 Disconnect the USB2.0 External Drive from computer..... 9**

**6. PARTITION THE USB2.0 EXTERNAL HARD DISK DRIVE..... 12**

**6.1 PARTITION UNDER WINDOWS 98/ME..... 12**

**6.2 PARTITION UNDER WINDOWS 2000/XP..... 16**

## 1. INTRODUCTION

The USB2.0 External Drive is a portable compact storage drive that incorporates the USB2.0 (Universal Serial Bus 2.0) high speed interface . The USB2.0 External Drive provides a fast and easy way to add more storage space to your computer. The Plug & Play feature gives you a great convenience on the road, the USB2.0 External Drive can be easily connected to computer by USB interface, and can even be disconnected and re-connected while the computer is running .

The USB2.0 External Drive is compatible with Apple Macintosh and Windows Computers.

**Note:**

**In order to reach USB 2.0 speed, you must have a computer or host adapter card that has USB 2.0 support. This device will auto sense the speed of your USB port and adjust between USB 1.0 and USB 2.0 speed.**

## **2. SYSTEM REQUIREMENTS**

### **Hardware :**

Notebook and desktop computer with USB or USB2.0 port supported.

### **Operation system:**

Win98SE, Win-me, Win2000, Win XP, Mac OS 8.60 or above.

## **3. HARDWARE INSTALLATION**

**Step 1** Boot-up your computer into the operation system, make sure the USB / USB2.0 port device driver has installed and available in operation system.

**Step 2** Plug the port connector of the USB cable into the USB Port of your USB2.0 External Drive .

**Step 3** Plug the port connector of the USB cable into USB port of computer.

**Step 4** Plug the AC power cord to the inlet of your USB2.0 External Drive and power on the drive . Your USB2.0 External Drive will be ready to use.

**Step 5** Follow the Software Installation for the next.

**Note:**

**In order to reach USB 2.0 speed, you must have a computer or host adapter card that has USB 2.0 support. This device will auto sense the speed of your USB port and adjust between USB 1.0 and USB 2.0 speed.**

## **4. Drivers INSTALLATION**

### **4.1WINDOWS 98SE**

1. Boot-up your computer into the Windows 98SE,**make sure the USB port device driver has installed and available** in windows 98SE.

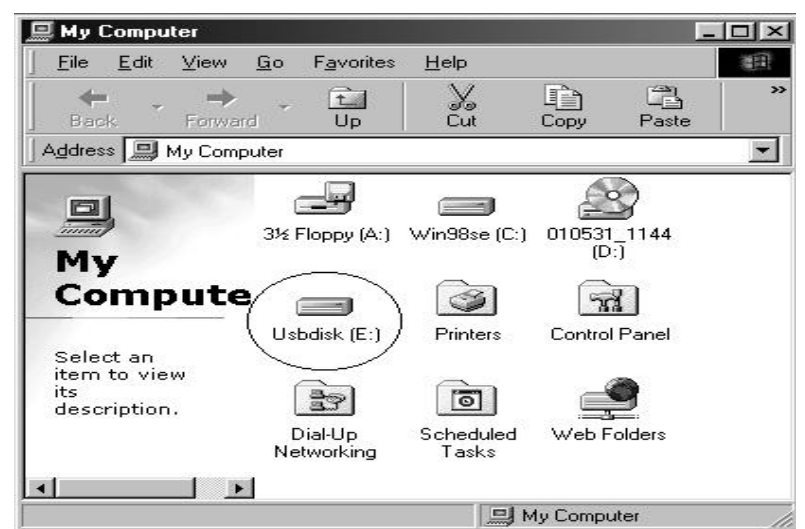
2. Plug the port connector of the USB cable of USB2.0 device into the USB port of computer.
3. IF this is the every first time you plug the USB2.0 Storage device into the USB port of computer, the **[Add New Hardware Wizard ]** dialog box appears .
4. Click on **[Next]**, check the **[Search for the best driver for your device]** , and click on **[Next]**.
5. Check the **[ CD-ROM drive]**, insert the device driver CD into your CD-ROM drive, click on **[Next]**, a screen should be appears to show which Storage Devices that you install now, click on **[Next]**.
6. After the needed files are copied into your system , click on **[Finish]**.





7. After the system install the link driver. Double click on **[My Computer]**, a new drive letter is added, it is the USB Storage Device which just installed.

A green Unplug or Eject hardware icon will appear in system tray too.



If the new drive doesn't appear in My Computer, it means this USB2.0 External Drive is a whole new hard disk drive which doesn't contain any partition, please refer to the Partition the USB2.0 External Hard Disk chapter to prepare your USB2.0 Hard Disk.

## 4.2 Windows Me / 2000 / XP

**Step1** If you are plugging the USB External Drive into your computer for the every time, system will detect USB2.0 Storage Device and install the driver of **[USB Mass Storage Device ]** from system files **automatically**.

**Step2** After the system installed the driver of USB mass storage device. Double click on [My Computer], a new drive Disk is added in a few seconds, it is the USB2.0 External Drive which just installed.

This USB2.0 External Drive is supported by Mass Storage Device in win Me/2000/XP system directly .You don't need to install any drivers. If the USB2.0 External Hard Disk is a whole new disk drive which doesn't contain any partition, please refer to the



Partition the USB2.0 External Hard Disk chapter to prepare your USB2.0 External Disk.

### **4.3 Mac OS**

1 This USB2.0 External Drive is supported by the Mass Storage Support 1.3.5 in Mac OS . You don't need to install any drivers.

#### **2. Mac OS 8.6**

If you are using Mac OS 8.6, the software of Mass Storage Support 1.3.5 is required to install. You can download The USB Mass Storage Support 1.3.5 from the Apple Software Updates web site [Http://www.apple.com/support](http://www.apple.com/support).

#### **Mac OS9.0 or later**

You don't need to install this software if you have installed Mac OS 9.0 or above.

3. When you plug this USB Hard Disk into the USB port of your Mac computer, the mass storage volume should appear on the desktop in a few seconds automatically.

## **5. USING THE USB2.0 EXTERNAL DRIVE**

After the first time installation, you can connect or disconnect the USB2.0 External Drive without power off the computer, please follow the steps when you want to do the above actions:

### **5.1 Connect the USB2.0 External Drive to computer**

**Step1** Plug the port connector of the USB cable into the USB Port of your USB2.0 External Drive.

**Step2** Plug the port connector of the USB cable into the USB port of computer.  
Plug the AC power cord to the INLET of your USB2.0 External drive and  
Turn on the power switch on your USB2.0 External Drive.

**Step3** USB2.0 External Drive is ready for use immediately.

## 5.2 Disconnect the USB2.0 External Drive from computer

### 5.2.1 Windows 98SE

#### Step1.

Double click the green Unplug or Eject hardware icon in system tray and select the device that you want to remove and click on [Safety Remove] .



#### Step2

When the system prompts ‘**Confirm device to be stop**’, click on [OK]  
When the green Arrow Icon is disappeared, plug out the USB cable from the USB port of computer.



**5.2.2 Windows Me/2000/XP:**

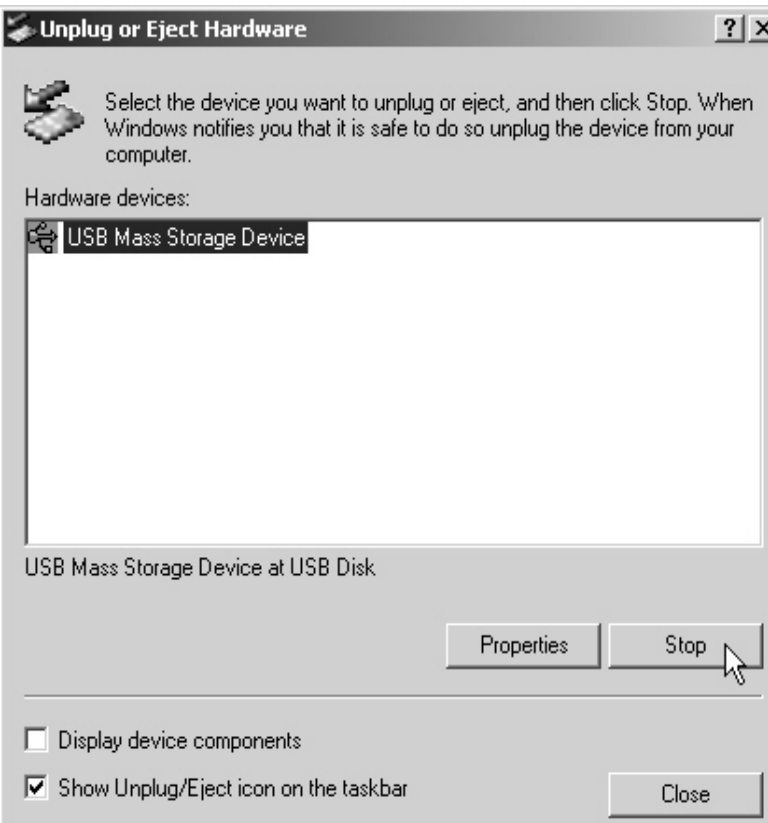
**Step1** Double-click on the  
**[Unplug or Eject Hardware]**  
icon in system tray.

Dialog box appears as right.

**Step2** Highlight the **[USB Mass Storage Device]**  
in the dialog box, click on **[Stop]**, choice  
the USB2.0 External Drive that you want  
to disconnect, then click on **[Stop]** again  
on next screen.

**Step3** Wait for few seconds, the system prompts  
**“You may safely remove this device”**.

Plug out the USB cable from the USB port of computer.



### **5.2.3 MAC OS**

When disconnecting your USB2.0 External Drive from computer, close all windows and quit all running applications that are stored on the USB2.0 External Drive and drag USB2.0 External Drive's icon into **“Trash”** to dismount it from the Desktop prior to unplugging the USB2.0 External Drive from the USB port .

### **CAUTION !!**

**Do not plug out the USB2.0 External Drive from the USB port of your computer or HUB while copying files to or from the device or while files or applications stored on the USB2.0 External Drive are in use.**

**DOING SO MAY RESULT IN LOSS OF DATA.**

## 6. PARTITION THE EXTERNAL USB2.0 HARD DISK

### 6.1 Partition under Windows 98/ME

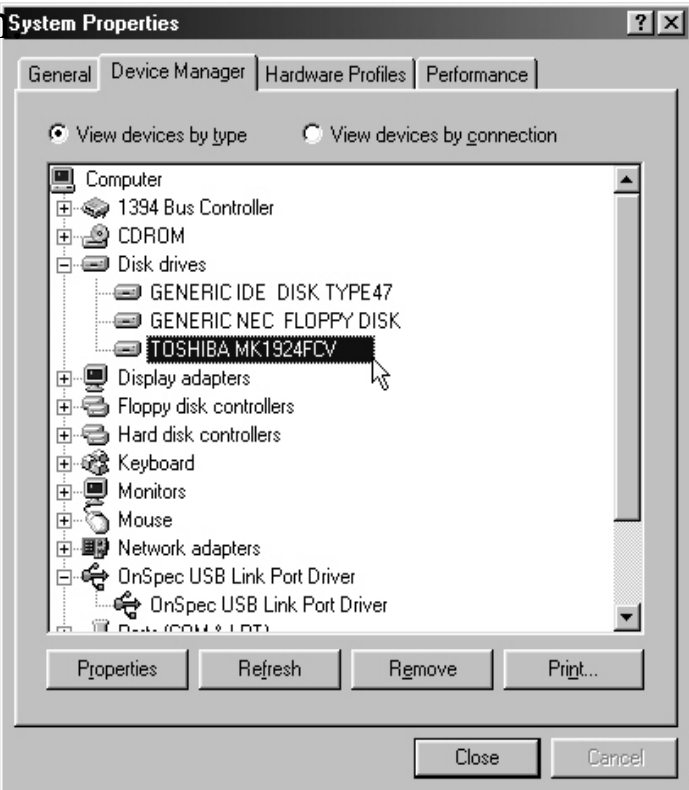
Boot-up the computer into Windows 98/ME system

Plug your USB2.0 Hard Disk Drive .

There are two methods to partition and format your USB2.0 Hard Disk Drive.

#### Method 1.

**Step1** Click on [start], choice the [control panel] in [setting],double click [system] and open [hard disk] . A screen appears as right.



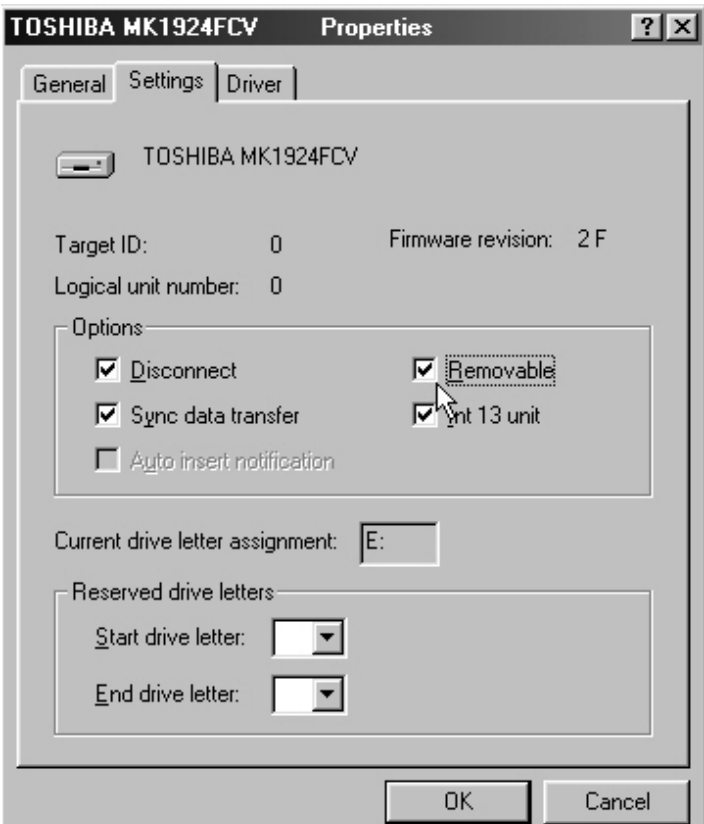


**Step2** You can see the USB2.0 hard Disk you just add. High light the USB Hard Disk and choice the **[property]**, select **[setting]**,setting the USD2.0 Hard Disk to **[removable]**.  
A screen show as right.

**Step3** After restart the system, a removable HDD is added to **[My Computer ]**. Choice the removable HDD and click right bottom of mouse . Select the **[format]** to format you USB2.0 Hard Disk Drive.

**You only can set the USB2.0 Hard Disk Drive to one partition in this method.**

**Method 2**



**Step1** Go into the MS-DOS mode by click on **[Start]**, choice the **[MS-DOS Prompt]** in **[Programs ]**

**Step2** At the DOS prompt, type **[FDISK]** and press Enter.

**Step3** If FDISK quit without any message, back to the Windows 98 screen, plug out the USB2.0 Hard Disk, re-boot computer , plug in USB2.0 HDD again and go back to step 1 to proceed.

**Step4** In the first screen of FDISK, answer the question:

**Do you want to enable large disk support ?**

**[Y]** if you want to build a partition larger than 2GB

**[N]** if you want to build a partition small than 2GB.

**Step5** The next screen is **[FDSIK OPTIONS]**, and type “5” to select disk. The screen show as right.



**IMPORTANT:**

you must type **[5]** in this screen to change the current fixed disk drive to build partition, the default fixed drive set by FDISK is your internal hard disk, if **you don't change the fixed disk drive to the USB2.0 Hard Disk, the data of your internal hard disk will be destroyed.**

**Step6** In the **[Change Current Fixed Disk Drive]**, type the disk drive number that assigned to the USB2.0 Hard Disk .

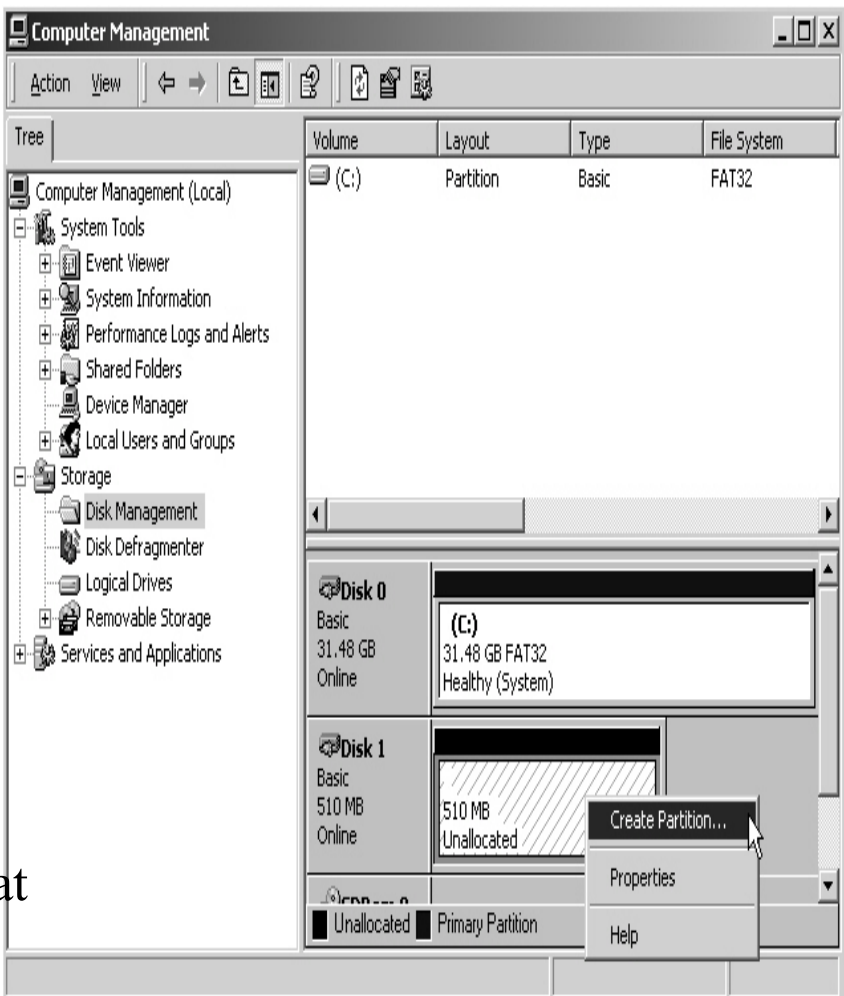
**Step7** Back to **[FDISK OPTIONS]** screen, Now you can create or delete the partition of the USB2.0 Hard Disk.

**Step9** After you finish FDISK, back to the Windows screen, plug out and plug in USB2.0 Hard Disk again to activate these changes. Double click on **[My Computer]** icon, the USB2.0 Hard Disk Drive that you already partitioned will appear.

## 6.2 Partition under Windows 2000/XP

**Step1** .To partition the USB2.0 Hard Disk Drive under Windows 2000, please plug The USB2.0 Hard Disk , then click on [Start],choice the [Control Panel] in [Settings],open [Administrative Tools] , double click [Computer Management]. A window appears as right.

**Step2** Click on [Disk Management] on the left part of this window, all connected disk drives will be listed in the right part. Find out the USB2.0 Hard Disk that you add. On the right of disk # is the



status of the partitions of this disk drive, you can create a new or delete an exist partition by right-click on this area.

**Step3.** Right-click on the right area of USB2.0 Hard Disk Drive, click on **[Create Partition....]**

The **”Create partition wizard”** will appears.

**Step4.** Following the instructions of wizard to partition and format your USB2.0 Hard Disk Drive.

Now ,you have built a partition in the USB2.0 Hard Disk Drive, you can write data to it.