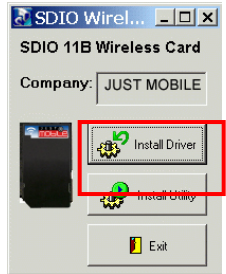


## INSTALLING THE DRIVER

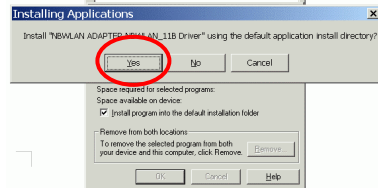
### Installation of the SD WLAN Card Driver to the Pocket PC using Microsoft Active Sync®

1. Connect your PDA to your computer and make sure Active-Sync® has established a connection between the two devices.
2. Insert the CD-ROM to your PC. The main screen will appear, click **Install Driver** to start driver installation. After driver installation is complete, click **Install Utility** to start utility installation.

**Note: Do not insert the SD WLAN Card into the card slot of your PDA until the Driver (Step 1) and Utility (Step 2) have been performed.**



3. Click **“YES”** to continue the installation.



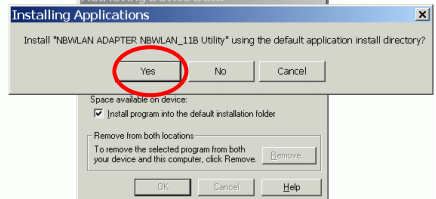
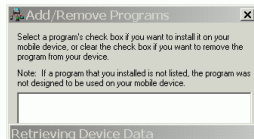
4. Click **“OK”** to complete the driver installation.



## INSTALLING THE UTILITY


1. Click **Install Utility** to perform utility installation.
2. Click **“YES”** to continue the installation.




3. Click **“OK”** to complete the driver installation.



CONFIGURING IPC WLAN UTILITY

1 Status tab

SD WLAN Utility

8:34

SSID

ANY

Status

Disconnected

Type

Infrastructure Station

Channel

6

Tx Rate

IP

MAC

00-08-E1-FF-39-B2

Signal

0 %

Set AP

Quality

0 %


Status

Statistics

Site Survey


Radio




About



SSID	The current access point name (ESS ID)
Status	The current connection status.
Type	The current connection mode.
Channel	The wireless radio channel currently used by the card.
Tx Rate	The current transmit rate. This can be 1 Mbps, 2 Mbps, 5.5 Mbps.
IP	The IP address of the card.
MAC	The MAC address of the card.
Signal	Shows the signal strength of the received signal.
Set AP	Click to enter wireless network configuration

2 Statistics tab

SD WLAN Utility

2:37

Tx Success

0

Tx Error

0

Tx Throughput (Kbps)

0.00

Rx Success

0

Rx CRC Error

5633

Rx Throughput (Kbps)

0.00

Reset


Status

Statistics

Site Survey

Radio

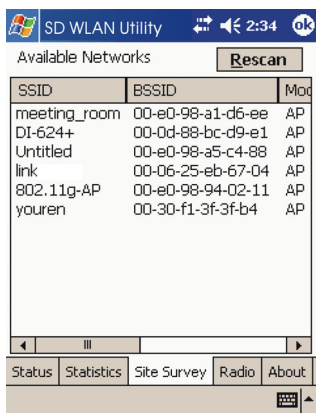
About



Tx Success	The number of successfully transmitted packets.
Tx Error	The number of unsuccessfully transmitted packets.
Tx Throughput (kbps)	The actual instantaneous transmit rates, in Kbps.
Rx Success	The number of successfully received packets.
Rx CRC Error	The number of unsuccessfully received CRC packets.
Rx Throughput (kbps)	The actual instantaneous receive rates, in Kbps.
Reset	Click to clear the previous settings.

3

## Site Survey tab



### Rescan

Click to search for all available networks, the device will start to rescan and list all available sites.

### SSID

The current access point name.

### BSSID

The MAC address for the Access Point or station.

### Mode

The currently connected device mode.

### WEP

WEP (Wired Equivalent Privacy) shows the current WEP used in the AP. WEP can be enabled or disabled.

### CH

The wireless radio channel currently used by the card.

### Signal

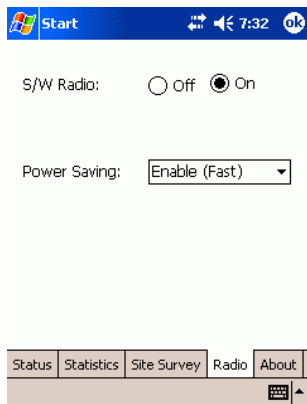
The signal strength from the network Access Point or station.

### Support Rates

Displays all the supported rates.

4

## Radio tab



### S/W Radio

Select **Off** or **On** to turn off/on Radio Frequency function.

### Power Saving

**Disable:** Select to disable power saving function.

**Enable (Max):** Select to enter power saving mode instantly.

**Enable (Fast):** Select to enter power saving mode later (Under the circumstances of not receiving/transmitting packets, the system will enter Power Saving mode in 10 seconds).

5

## About tab

Shows the driver version and the setup utility software version.