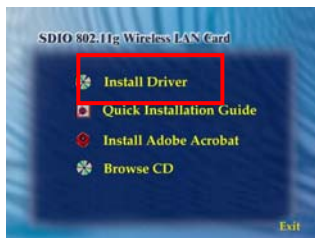


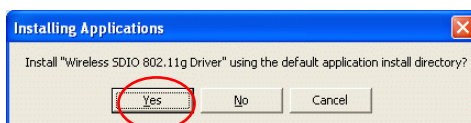
## INSTALLING THE DRIVER

### Installation of the SD WLAN Card Driver to the Pocket PC using Microsoft Active Sync®

1. Connect your PDA to your computer and make sure Active-Sync® has established a connection between the two devices.
2. Insert the included CD-ROM to your PC. The main screen will appear, click **Install Driver** to start driver installation.

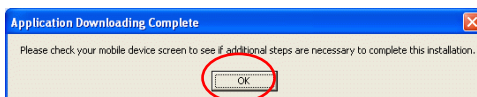


**Note:** Do not insert the SD WLAN Card into the card slot of your PDA until the Driver installation has been performed.



3. Click **"YES"** to continue the installation.

4. Click **"OK"** to complete the driver installation.

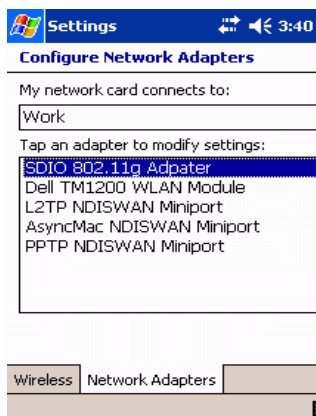
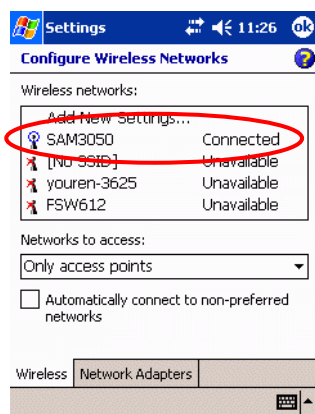


## ACCESSING THE WLAN UTILITY

1. Insert the **SDIO Wireless LAN Card** into the SD slot of your PDA
2. Go to **Start > Settings > Connections tab > Wireless Ethernet** to access the Windows CE built-in WLAN utility

## CONFIGURING WLAN UTILITY

Select an available AP or router from the list and tap **Connect** to make a connection.



Wireless tab	
<b>Wireless Network</b>	Select an available network device from the list and tap <b>Connect</b> .
<b>Network to access</b>	Select the type of network access from the pull-down list. <b>All available:</b> A group of wireless devices communicating with both access points and network adapters. <b>Only access points:</b> A group of wireless devices communicating directly with only access points. <b>Only computer-to-computer:</b> A group of wireless devices communicating directly with each other without the use of an access point.
<b>Automatically connect to non-preferred networks</b>	Tap the checkbox to enable this function, if the Automatically connect to non-preferred networks is enabled, your device will detect all the new networks for you to configure.

Network Adapters tab	
<b>My network Card connects to</b>	Tap <b>Work</b> or <b>The internet</b> from the pull-down menu. <b>Work:</b> Connects to the network in your office. <b>The internet:</b> Connects to your ISP at home.
<b>Tap an adapter to modify settings</b>	Tap an adapter from the list to enter its configuration screen.

If **SDIO 802.11g Adapter** is tapped, the following screen will appear for you to configure:

Settings 11:29 OK

**SDW11g WLAN Adapter**

☒ Use server-assigned IP address

☐ Use specific IP address

IP address: fe80::20c:e7ff:fe0

IP Address Name Servers

Settings 11:29 OK

**SDW11g WLAN Adapter**

☐ Use server-assigned IP address

☒ Use specific IP address

IP address: . . .

Subnet mask: . . .

Default gateway: . . .

IP Address Name Servers

Settings 11:29 OK

**SDW11g WLAN Adapter**

Name server addresses may be automatically assigned if DHCP is enabled on this adapter.

DNS: . . .

Alt DNS: . . .

WINS: . . .

Alt WINS: . . .

IP Address Name Servers

IP Address tab	
<b>Use server-assigned IP address</b>	To use DHCP, tap <b>User assigned-IP Address</b> . The Wireless Router will act as a DHCP server. An IP Address will be obtained from the Wireless Router.
<b>Use specific IP address</b>	<p><b>IP Address:</b> Enter the IP address (within the range of the wireless router's IP address, for instance, if the IP address of the router which you wish to connect is 192.168.1.254, you may enter the IP address here from 192.168.1.1 to 192.168.1.253 ).</p> <p><b>Subnet mask:</b> The Subnet Mask must be the same as that set on your Ethernet network.</p> <p><b>Default Gateway:</b> Enter the IP address of your network's gateway. The gateway is the device that enables communication between your computers and the Internet. In most cases, your router acts as your gateway.</p>

Name Servers tab	
<b>DNS</b>	Enter the IP address of your ISP's server, which translates the names of websites into IP addresses.
<b>Alt DNS</b>	The secondary IP address of your ISP's server.
<b>WINS</b>	The Windows Internet Naming Service (WINS) converts NetBIOS names to IP addresses. If using a WINS server, please enter that server's IP address. Otherwise, leave this field blank.
<b>Alt WINS</b>	The secondary IP address of your WIN server.

©2006 by Mobis Technology Ltd. All rights reserved. No part of this manual may be reproduced, copied or translated in any form or by any means without prior written consent from Mobis Technology Ltd..

The content of this manual is subject to change without prior notice. Mobis Technology Ltd. is not liable for any damages resulting from changes to this manual. However, updates to this documentation can be obtained from the following website: <http://www.just-mobileonline.com>

Just Mobile® is a trademark of Mobis Technology Ltd. All other brand names used in this document are registered trademarks of their respective companies

M73-APO11-270