

## **HOLUX ezUpdate operation process**

<b>HOLUX ezUpdate V2.00 support device</b>
GPSport245

<b>HOLUX ezUpdate V2.00 attention</b>
<ul style="list-style-type: none"><li>1. Do not disconnect cable from device or PC site in process of updating.</li><li>2. Please make a copy and delete the Log data in before update.</li><li>3. The firmware version above V1.01 has Odometer function , user must reset all Odometer after updating firmware.</li></ul>

## Step1 : Install USB driver

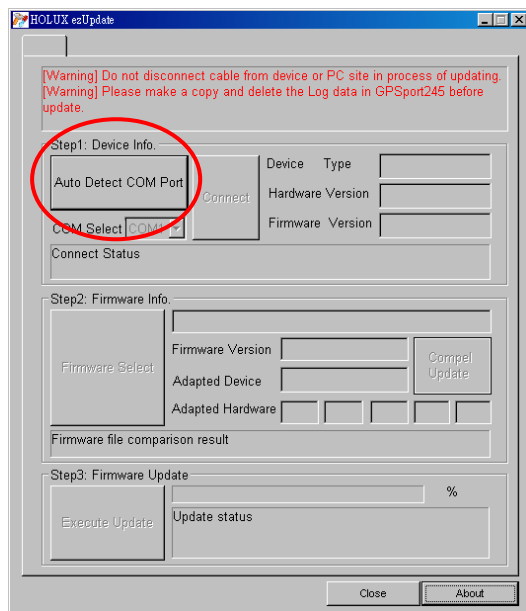
Execute CP210x\_VCP\_Win2K\_XP\_S2K3.exe

## Step2 : Start HOLUX ezUpdate

Execute HOLUXezUpdate.exe

## Step3 : Detect COM Port

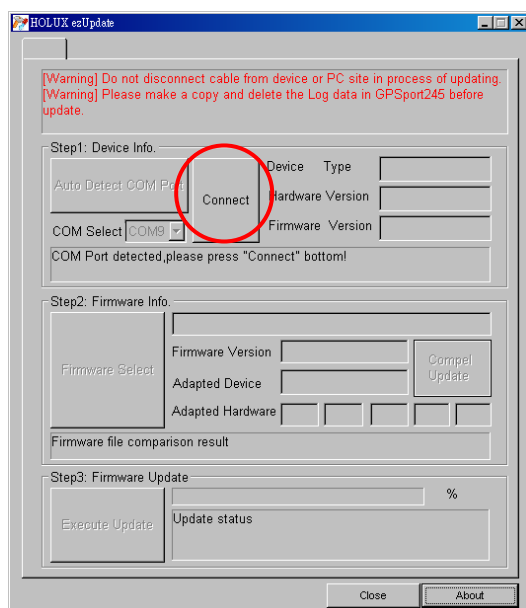
Connect USB Cable and GPSport245 , press **Auto Detect COM Port** bottom.



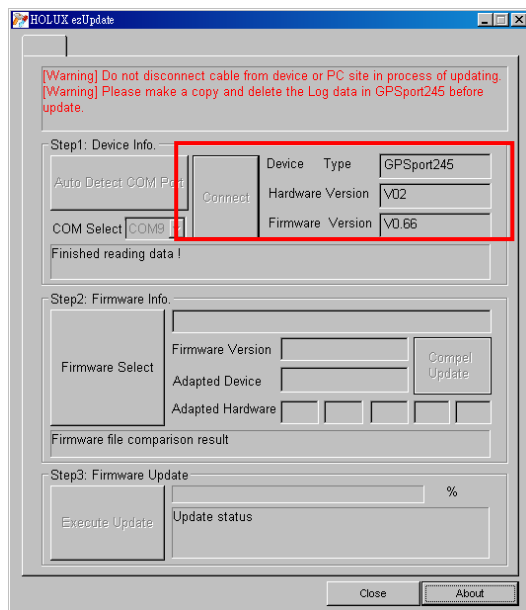
If detect COM Port , press **Connect** bottom.

If fail to detect COM Port , select COM Port and then press **Connect** bottom.

[The way to select COM Port , please refer to Q&A1]

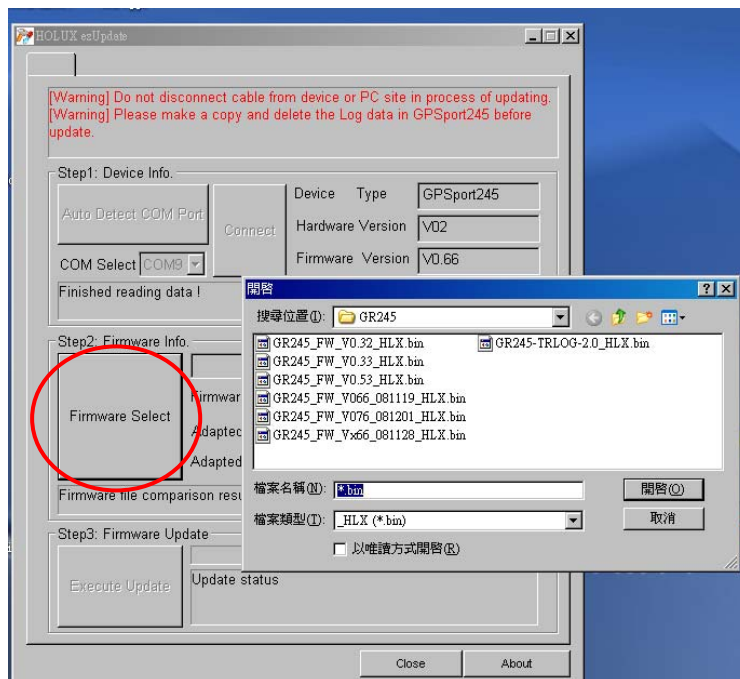


## Display information (Device Type/Hardware Version/Firmware Version)



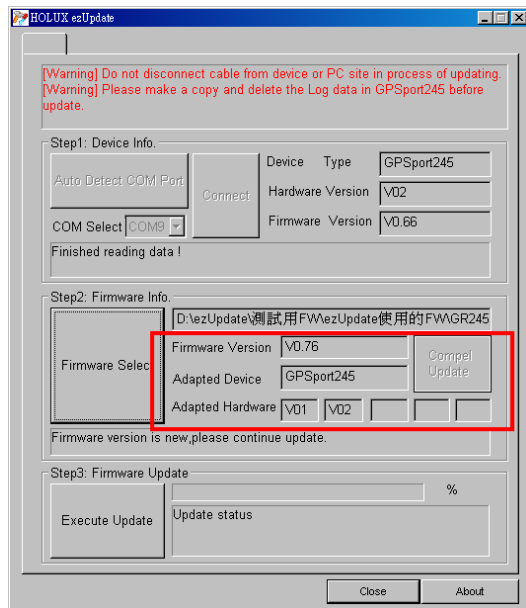
### Step4 : Select firmware file

Press **Firmware Select** bottom , select firmware file which will update (.bin file ends with \_HLX).



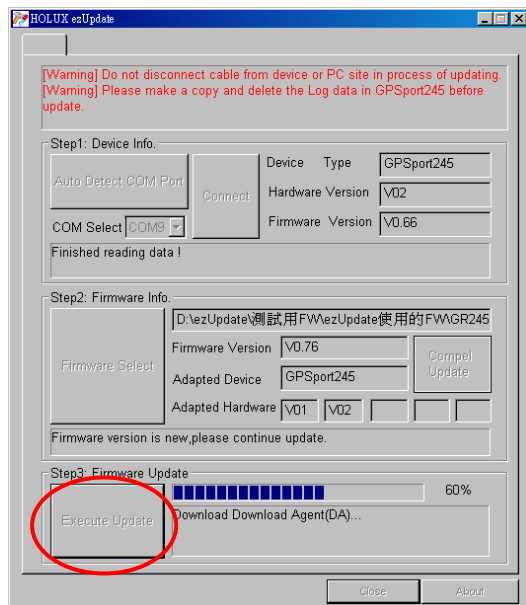
## Display firmware information

(Firmware Version/Adapted Device/ Adapted Hardware)

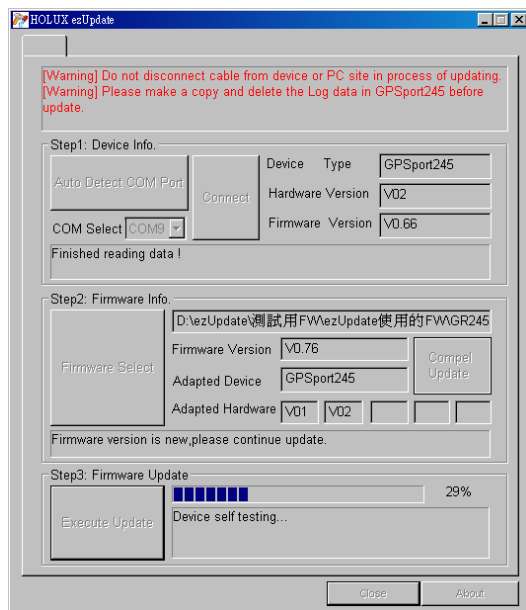


## Step5 : Update Firmware

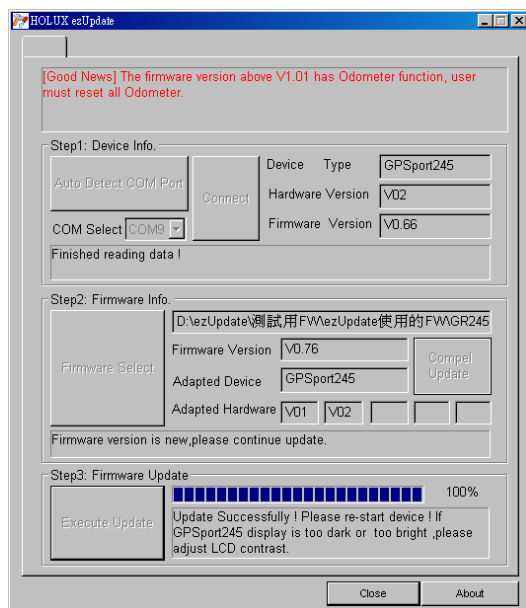
Press **Execute Update** bottom , it will take about 2~3 minutes to update.



## Device self test



## Update successfully

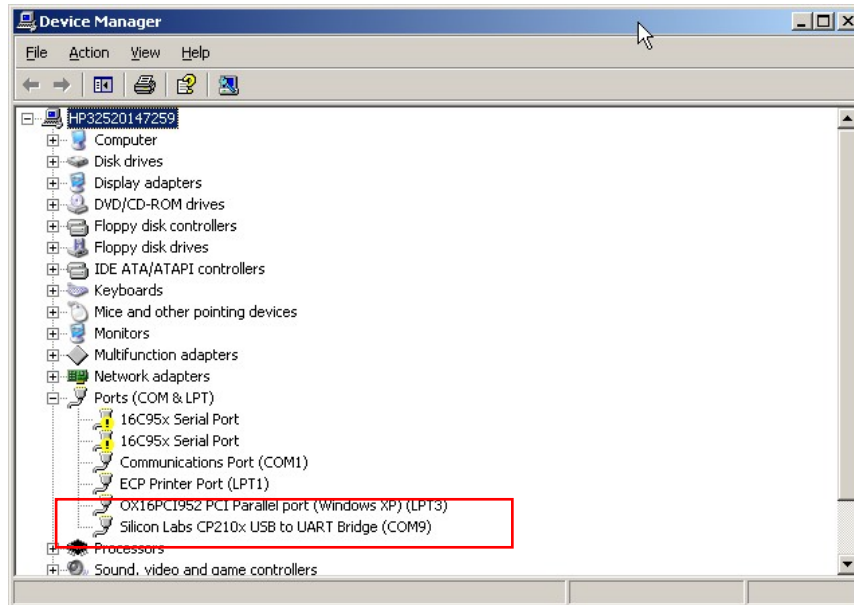


## Step6 : Restart device

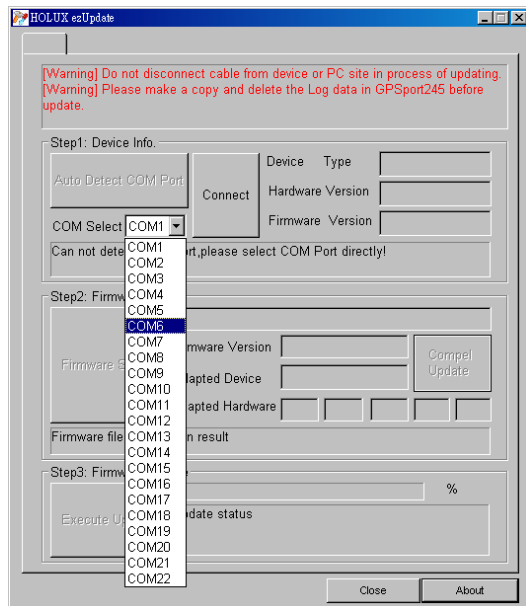
Please restart device to confirm the setting values will work.

## Q&A1 : How to set COM Port

Open **Device Manager** , under Ports item :  
the COM Port of Silicon Labs CP210x USB to UART Bridge is.  
(This example is COM9)



And select COM Port in the ezUpdate COM Port list.



## Q&A2 : COM Port can't be set

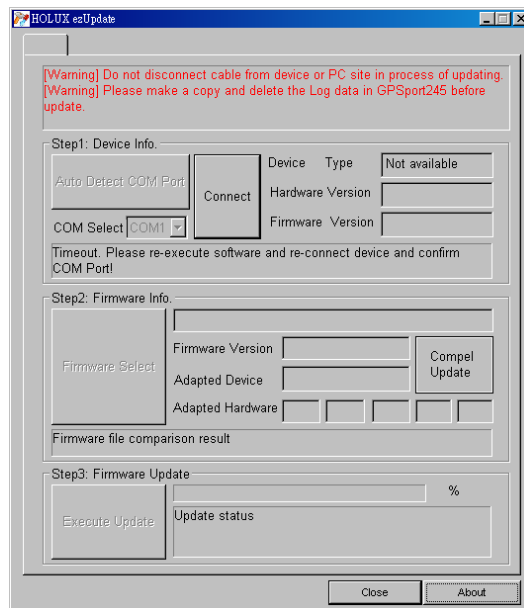
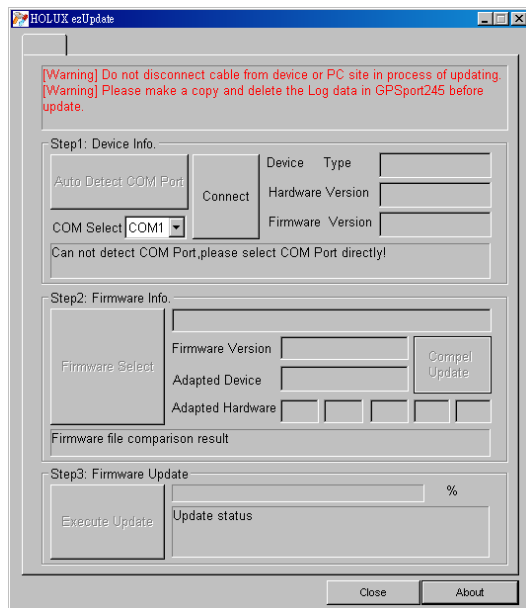
If Auto Detect COM Port can not detect COM Port and COM Select still can not detect COM Port or the cursor in the monitor shift irregularly.

Please follow the operation :

**Step1 : Turn Off GPSport245**

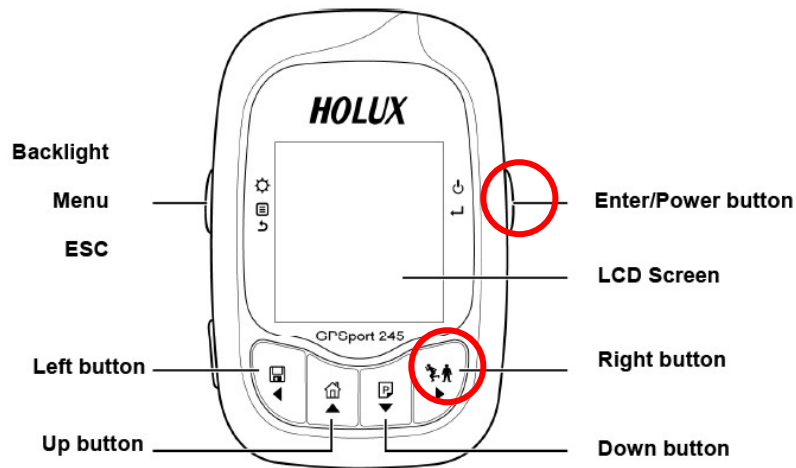
**Step2 : Re-connect USB table**

**Step3 : Re-execute ezUpdate**



### Q&A3 : Screen no response after updated

If screen of device which was updated has no response, please press **[Enter] + [Right button]** two buttons to reset hardware. Then remove USB cable and re-connect, you can update firmware again.



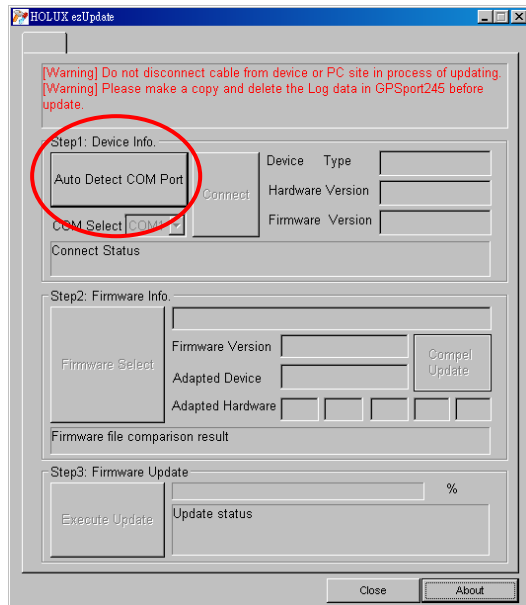


## Q&A4 : Compel Update

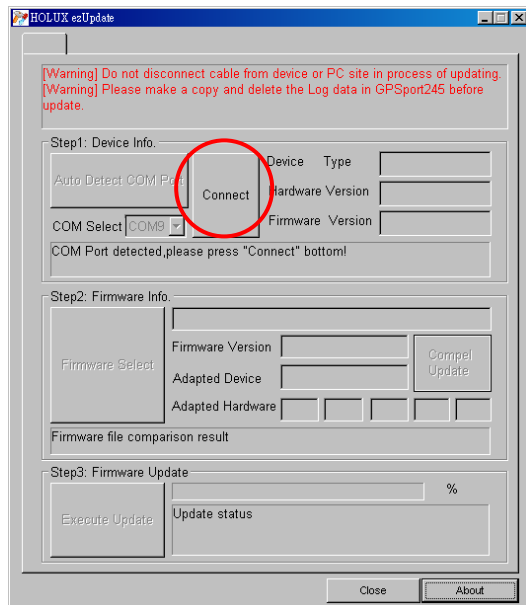
If you remove USB cable in the process of update , the device screen will not display anything . At this situation , you must compel update .

**Step1 : Re-execute ezUpdate and re-connect USB cable**

**Step2 : Auto Detect COM Port**



**Step3 : Connect**



## Step4 : Compel Update

HOLUX ezUpdate

[Warning] Do not disconnect cable from device or PC site in process of updating.  
[Warning] Please make a copy and delete the Log data in GPSPort245 before update.

Step1: Device Info.

Auto Detect COM Port  Device Type   
COM Select  Hardware Version   
Firmware Version   
Timeout. Please re-execute software and re-connect device and confirm COM Port!

Step2: Firmware Info.

Firmware Select   
Firmware Version   
Adapted Device   
Adapted Hardware   
Firmware file comparison result

Step3: Firmware Update

%

## Step5 : Select firmware

HOLUX ezUpdate

Confirm the USB connection !!  
Confirm the firmware file you chose !!  
Do not disconnect USB cable anymore !!!

Step1: Device Info.

Auto Detect COM Port  Device Type   
COM Select  Hardware Version   
Firmware Version   
Timeout. Please re-execute software and re-connect device and confirm COM Port!

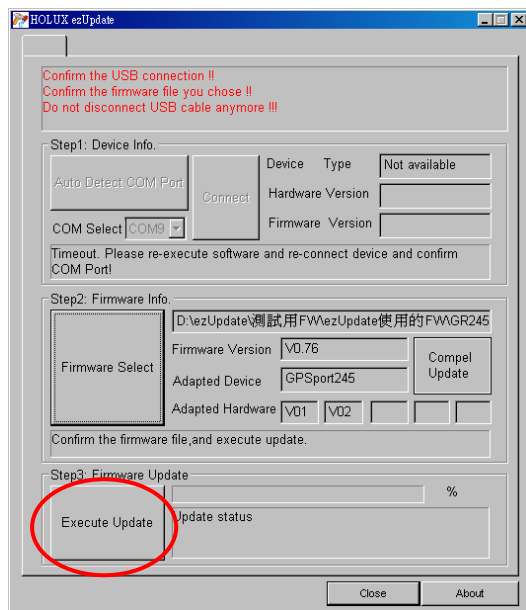
Step2: Firmware Info.

Firmware Select   
Firmware Version   
Adapted Device   
Adapted Hardware   
Firmware file comparison result

Step3: Firmware Update

%

## Step6 : Execute Update



## Update successfully

