

# **Grand IP Media Player**

## **(Network Digital Media Player)**

### **User's Manual**

The information in this document is subject to change without notice.

This document contains materials protected by copyright. All rights are reserved. No part of this manual may be reproduced or transmitted in any form, by any means or for purpose without express written consent.

#### **CE DECLARATION**

This device complies with CE class B.

* EN55024		EN61000-4-5
EN55022	EN61000-4-2	EN61000-4-6
EN61000-3-2	EN61000-4-3	EN61000-4-8
EN61000-3-3	EN61000-4-4	EN61000-4-11

**Printed in Taiwan R.O.C.**

**All contents are subject to change without notice.**

**All trademarks are the property of their respective owner.**

<b>Table of the Contents</b>	
<b>Chapter 1 Welcome to Grand IP Media Player</b>	<b>4</b>
1.1 Introduction	4
1.2 Product Features	4
1.3 System Requirements	5
1.4 Package Contents	5
<b>Chapter 2 Hardware Installation and Operation Guide</b>	<b>6</b>
2.1 Connectors	6
2.2 Panel buttons and switch	7
2.3 Remote Controller button function	8
2.4 Installation for IBM PC	9
<b>Chapter 3 Display on TV LCD TV or VGA Monitor</b>	<b>10</b>
<b>Chapter 4 Network Installation and Operation Guide</b>	<b>14</b>
4.1 First time to login IP Media Player	14
4.2 Quick setup in the Router (DMZ function setup)	18
4.3 More than 1 IP media players under the router	20
4.4 Limitation of FTP Protocol	23
4.5 How to Connect to ADSL	27
4.6 How to Upload and Play Media	30
<b>Chapter 5 TROUBLESHOOTING</b>	<b>33</b>

Issue:04/12/2006

Version: A

P/N: 34398000

## **CHAPTER 1**

### **Welcome to Grand IP Media Player**



#### **1.1 Introduction**

**Grand IP Media Player** is network storage player that provides all kinds of network connection, such as:10/100M Ethernet, fixed IP address, ADSL PPPoE, Dynamic IP(DDNS).You can upload your favorite multi-media (picture,MPEG1,MPEG 2,Music,AVI files)to the CF card from all over the world. All you have to do is just typing the IP address through Internet Explorer and remote control the media storage to display multi-media files on TV.

## 1.2 Product Features

- 1.Remote control media Player through the IE Browser
- 2.Embedded FTP Server:Upload, delete, download, rename Media Files under the CF card.
- 3.Support many Network services : HTTP (User Interface) , FTP (File Management) , PPPoE ( Fixed IP Address is recommended ) , Dynamic DNS , and firewall port forwarding (used in virtual IP address)
- 4.Supports multiple file formats: JPEG, MJPEG (AVI), MPEG I/II, Music. and AVI.
- 5.Supports CF Type I/II memory card.
- 6.Video output Format: Video, S-Video, YCbCr, YPbPr, and VGA.
- 7.Supports NTSC and PAL by switch.
- 8.Supports SLIDE SHOW (13 kinds EFFECT): with sequential and random.
- 9.Supports SLIDE TIME (INTERVAL) mode: interval time with 1,3, 5,10,30, 60 seconds and manual selection.
- 10.Supports MUSIC SLIDE show : Music with JPEG pictures play at the same time.
- 11.Supports ZOOM IN (ON) 4x & PAN, ROTATE, MIRROR, PREVIEW, REPEAT.
- 12.Includes Full functions Infrared remote Control.

## 1.3 System Requirements

- 1.TV, PDP, PROJECTOR, MONITOR with AV, SVideo, YCbCr, YPbPr and VGA input.
- 2.Router ( with DDNS or PPPoE function ) is required
- 3.10Base-T Ethernet or 100Base TX Fast Ethernet
- 4.Windows 98SE/ME/2000/XP
- 5.Intel Pentium3 800GHz, AMD 800 GHz or Faster
- 6.64M RAM or above
- 7.VGA card with 8 MB Memory or above
- 8.Microsoft DirectX 9

## 1.4 Package Contents

- 1.Grand IP Media Player
- 2.Remote Controller
- 3.Audio cable
- 4.S-Video cable
- 5.RJ-45 Cable (Cross over wire)
- 6.Power Adapter DC 5V/2A (-) ← ( → (+)
- 7.CD Driver
- 8.Quick Start
- 9.YPbPr Cable (Optional)
- 10.Video +Audio SCART cable for EU only (TV with SCART input)

## CHAPTER 2

### Hardware Installation and Operation Guide

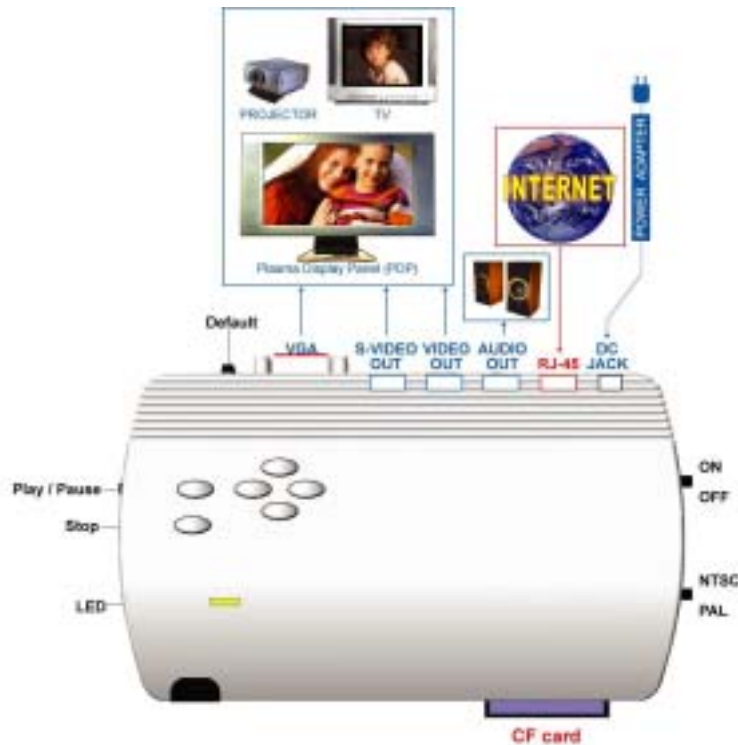


Fig.1 Outline of IP Media Player

#### 2.1 Connectors

**DC IN** : Plug with power adapter DC 5V/2A (-) ← ( → (+).

**RJ-45** : Connects RJ-45 cable to your router.

**AUDIO OUT** : Stereo audio signal output, connect to (amplified) speaker.

**VIDEO OUT** : Connects to video in of TV or projector.

**S-VIDEO OUT** : Connects to S-VIDEO in of TV or projector.

**VGA/COMPONENT OUT** : Connects to VGA / COMPONENT in of Monitor, projector or Plasma Display Panel.

**YpbPr/YCbCr Output** with YPbPr cable ( Cable is Optional )

**Compact Flash I/II sockets** : Insert cards into the sockets and support CF I/II.

**Default** : Press this button more than 10 seconds to return to the default value.

#### 2.2 Panel buttons and switch

**IR SENSOR** : Infrared input of remote controller.

**POWER LED** : LED will light, when power on.

**POWER ON/OFF switch** : Toggle between power on or off.

**NTSC/PAL switch** : Selects NTSC or PAL video system.

**Stop button** : press this button during a slide show, audio or video display will be stopped.

**Play/Pause button** : press this button to display a photo, play an audio or video file, and press this button again to pause.

**Up/Down/Left/Right button** : Press UP, Down, Left and Right to select item.

## 2.3 Remote Controller button function

**POWER** : Toggle between power on or off.

**MUTE** : Mute the Audio output.

**SETUP** : Press this button to setup settings.

**CARD SELECTION** : **Not used in this product.**

**EDIT** : Delete, Properties, Rename function

**VOLUME/+** : Volume up.

**VOLUME/-** : Volume down.

**UP/DOWN/LEFT/RIGHT** : Move up, down, left or right when selecting on your TV screen.

**ENTER** : confirm selections on your TV screen.

**PgUP** : go to the previous page or image.

**PgDo** : go to the next page or image.

**MUSIC** : Go to and display all music files.

**PHOTO** : Go to and display all photo files.

**MOVIE** : Go to and display all movie files.

**FILE** : Go to file library (all files).

**STOP** : Stop the selected file or playback.

**PAUSE** : pause the playback.

**PLAY** : play the selected file.

**REPEAT** : Play file repeatedly until stopped.

**REW** : Rewind movies.

**FF** : Forward movies.

**PREW** : Go to previous file.

**NEXT** : Go to next file.

**S-TIME** : Slide show time adjustment 1; 3; 5,10, 30, 60 seconds.

**S-MODE** : Change slideshow effect with sequential, random auto slide shows etc 13 kind of selections.

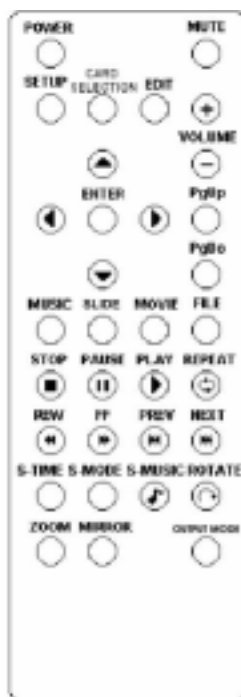
**S-MUSIC** : The music slide show function allows you to play Music audio files while a picture slide show is being displayed.

**ROTATE** : Rotate photo 90 degrees clockwise on screen.

**ZOOM** : zoom in (on) the image up to 4x.

**MIRROR** : When viewing images, you can use this button to mirror the image horizontally.

**OUTPUT MODE** : selection video, s-video, YCbCr, YPbPr and VGA output..



## CHAPTER 3

### Display on TV LCD TV or VGA Monitor

1.IP Media Player is Plug and Play. Easy to use with remote control.

2.After you turn on the power ,the following picture are appeared.



Fig. 4 Folder display



Fig.5 Root display

3.IP Media Player Setting setup reference.

**PHOTO SETUP** : This screen lets you change the following settings.

**THUMBNAIL DIGEST**: These thumbnails load faster and allow you to browse photos more easily .



**MUSIC SETUP** : This screen lets you change the following settings.

**REPEAT MODE** : ONE–Repeats the selected song.

ALL–Repeats all the songs on the memory card.

OFF–Do not repeat any song.



**SLIDESHOW SETUP** : This screen lets you change the following settings.

**SLIDESHOW MODE** : Set the slideshow starts automatically or not.

**FOLDER REPEAT**: Set all photos are shown once or continuously (loop).

**INTERVAL TIME** : Set the time each photo is shown. 1, 3,5, 10, 30, 60 seconds.

**TRANSITION (EFFECT)** : Set the transition mode between slides and with sequential, random auto shows etc 13 kind of selections.



**AUTO START** : When turned on, any media on the memory card plays automatically when the card is inserted.

**MOVIE SETUP** : This screen lets you change the following settings.

**INTERVAL TIME** : FAST—A short preview of movie plays in Thumbnail view.

**NORMAL** : The whole movie plays in Thumbnail view.

**REPEAT MODE** : OFF—REPEAT MODE is turned off.

**ONE** : Plays the selected movie continuously (loop).

**ALL** : Plays all movies on the memory card continuously (loop).



**PREFERENCES** : This screen lets you change the following settings.

**OSD LANG** : Choose the language for the OSD: ENGLISH, CHINESE, FRENCH, GERMAN, ITALIAN, JAPANESE, PORTUGUESE and SPANISH.

**DEFAULTS** : Reset all settings to the original (factory) settings.

**FIRMWARE** : F/W can upgrade the New F/W from Memory Card.

**EDITION** : Can show the F/W versions.

**UPDATE** : F/W can upgraded by memory cards.



4.Preview mode of Photo picture.



5.Photo Pan function:

Photo can be moved while zoom function mode.



## 6.Photo Rotation:

Photo can be rotated 90 degrees in one time.



## 7.Edit Functions:

a.Select the FILE mode( FILE LIBRARY ).



b.Press the EDIT key of remote control to execute the delete, New Folder, Rename and Properties.

c.**DELETE** : Enter to File Library and directly selected file that you want to delete. There will be another confirmation will be displayed and if you are sure, Please press YES. Other wise press NO.

d.Rename function is only for file not for folder. Select the file and press RENAME bar then key in new name and press STOP.

e.**NEW FOLDER** : Press the NEW FOLDER bar and key in the Folder Name and press STOP.

f.**Properties** : display the File Name, File Size, Picture Mode, Resolution and File created date.

# CHAPTER 4

## Network Installation and Operation Guide

### 4.1 First time to login IP Media Player

1.Execute the program in the CD, and remember to select the Unblock ( Windows XP SP2 only )



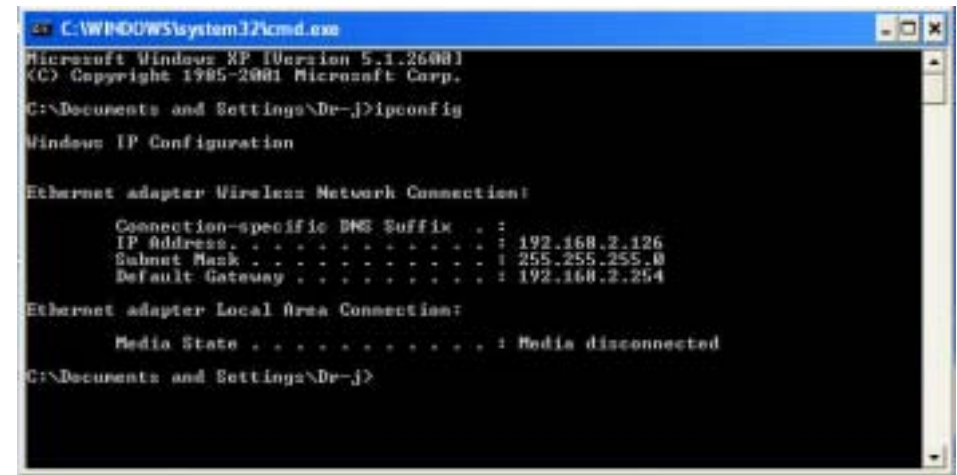
2."<http://192.168.1.100/>" has been listed in the left side, and Double click "...<http://192.168.1.100/>" to login the IP Controller



If you can not connect to the Address: 192.168.1.100, please refer to step3~step6.



3. Click Start->All Programs->Accessories->Command Prompt



4. Type the command "ipconfig" to get the network information
5. Then you can assign IP Address, Net mask (Subnet Mask) and default Gateway for the IP Controller
6. You must use the same Subnet Mask "255.255.255.0" and Gateway "192.168.2.254"
7. You can use any IP Address between 192.168.2.1-254, but please make sure that the IP Address has never been used or is used by any other IP addressable device.
8. For example: type the following parameters and click "setting"



IPBox: 192.168.2.100

Gateway	192	168	2	1
IP	192	168	2	100
Netmask	255	255	255	0

MAC: 00:13:FE:AA:00:01

Update Submit Exit

Connect to 192.168.1.100

Welcome

User name: root

Password:

☒ Remember my password

OK Cancel

Login to the IP Controller  
 Default IP Address: <http://192.168.1.100/>  
 Default User ID: root  
 Default User Password: admin

First time to setup the Network, please remember reboot the system

EyeZup4 Network Media Controller

Network Setup

Network Setup

Manually

Location Description: 192.168.2.100

IP Address: 192.168.2.100

Subnet Mask: 255.255.255.0

Default Gateway: 192.168.2.1

Automatically by DHCP

DHCP: 192.168.2.100

DHCP: 192.168.2.100

DHCP: 192.168.2.100

Free information center

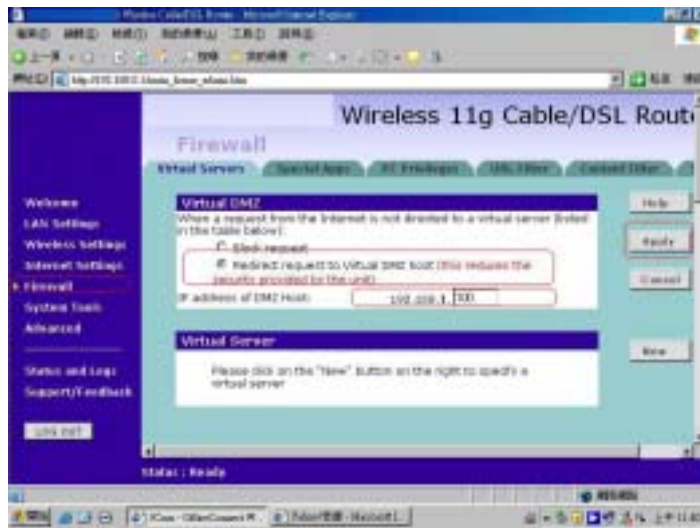
OK

#### 4.2 Quick setup in the Router (DMZ function setup)

If your network Architecture likes the following figure,  
 You will need to setup the router, there are two methods:



Method 1: Assign the DMZ function to the IP Media Player.



Method 2: Assign the Port Number to the IP Media Player.

The



default HTTP Port Number is 80  
The default FTP Port Number is 21

4.3 More than 1 IP media players under the router:



1. In this Page <http://192.168.1.100/Simple/users.htm> (IP Media Player1), please assign two different port numbers for the FTP and Http Protocols (for example FTP:7777,HTTP:6666)

FTP Port Number(freefill)

Http Port Number(freefill)

(Please remember reboot the system)

IP Media Player 2: <http://192.168.1.101/Simple/users.htm>

IP Media Player 2: FTP port :9999, HTTP port :8888

2. Setup your firewall or gateway, and assign a Local Virtual IP Address

IP MediaPlayer1 :IP:192.168.1.100

HTTP Port: 6666

FTP Port:7777

IP MediaPlayer2 :IP:192.168.1.101

HTTP Port: 8888



FTP Port:9999

3. In the Local PC, Please open the Internet Explorer then type the IP address: <http://192.168.1.100/>, <http://192.168.1.101/>

4. In the Remote PC, please open the Internet Explorer, then type the IP address: <http://61.30.13.40:6666> , <http://61.30.13.40:8888>

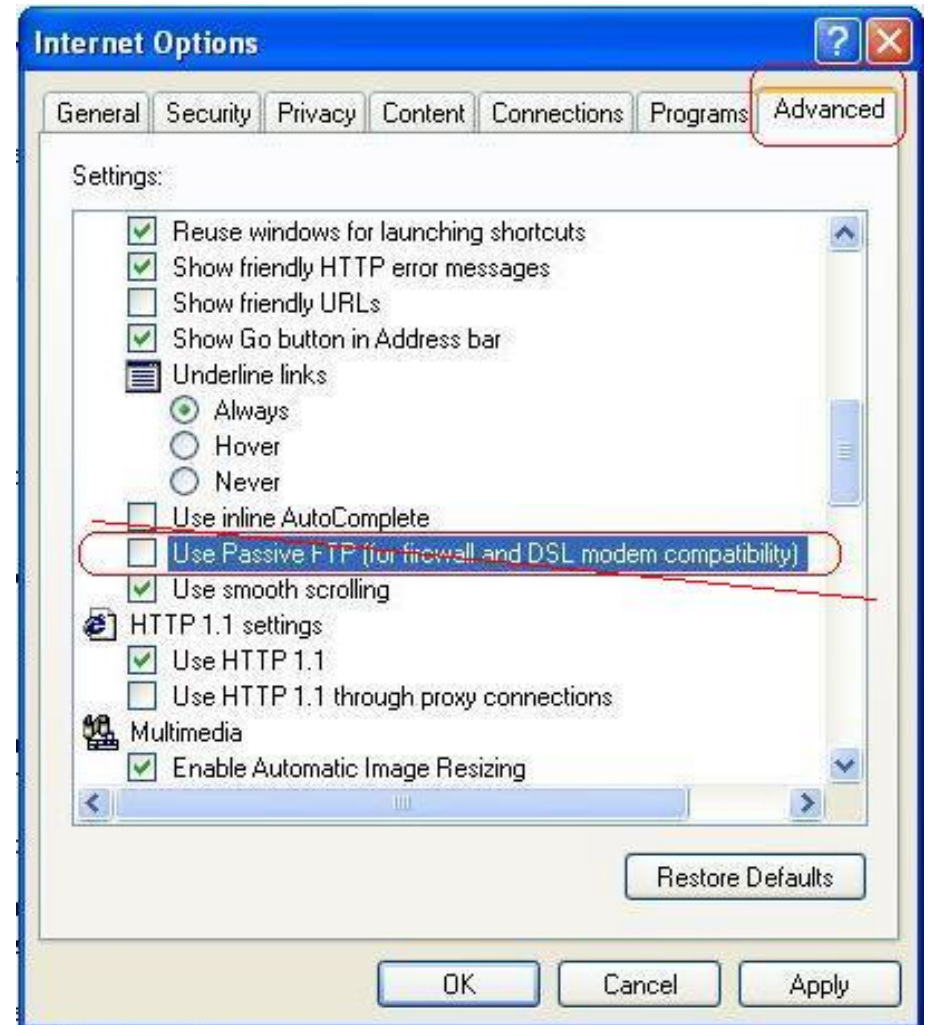


5. Setup the Internet Explorer about FTP Client

Step1: Click Tools->Internet Options

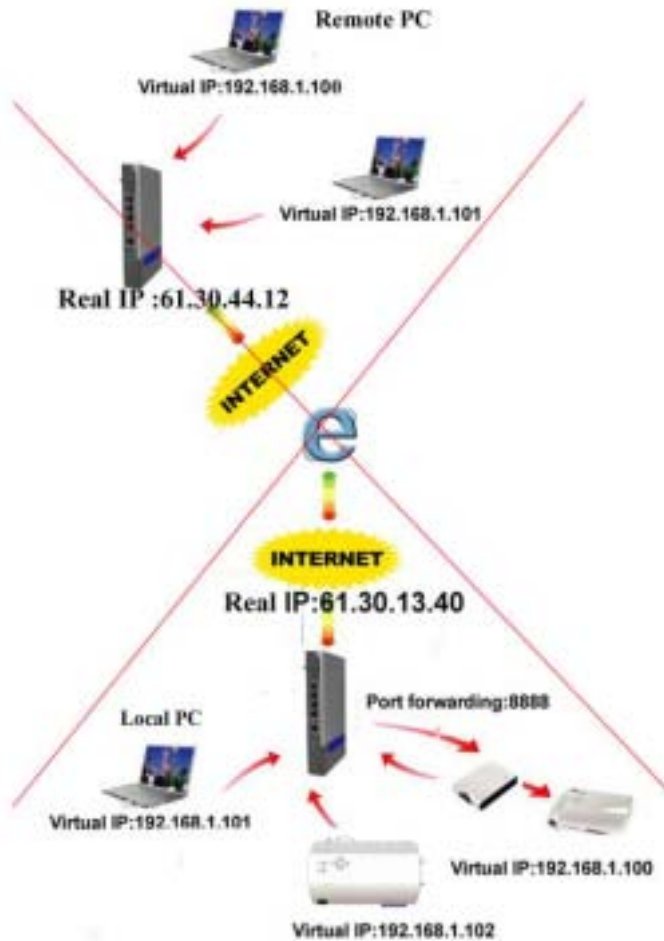
Step2: Click Tools->Internet Options->Advanced

Step3: Remove the Item "Use Passive FTP(for firewall and DSL modem compatibility)"

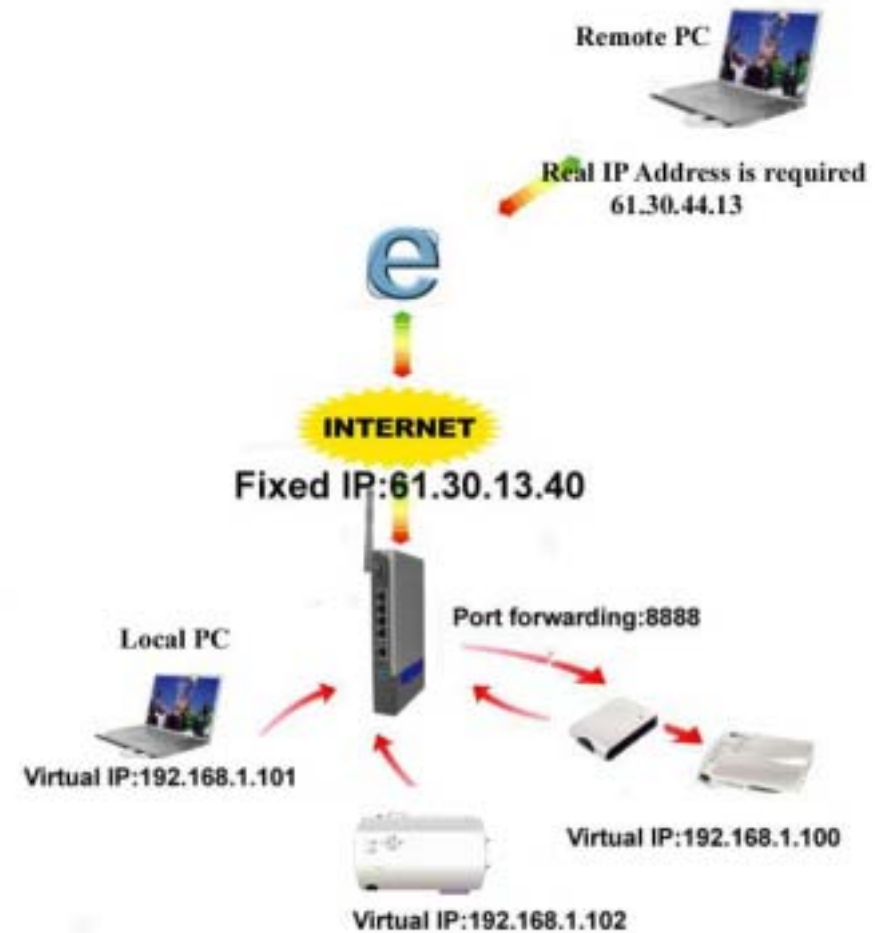


#### 4.4 Limitation of FTP Protocol

If your network Architecture is the same as the figure, you can not transfer Files with FTP, because **FTP server (IP Media Player) and FTP client (Remote PC) both are virtual IP addresses.**



You need to change the Remote PC to be a real IP address

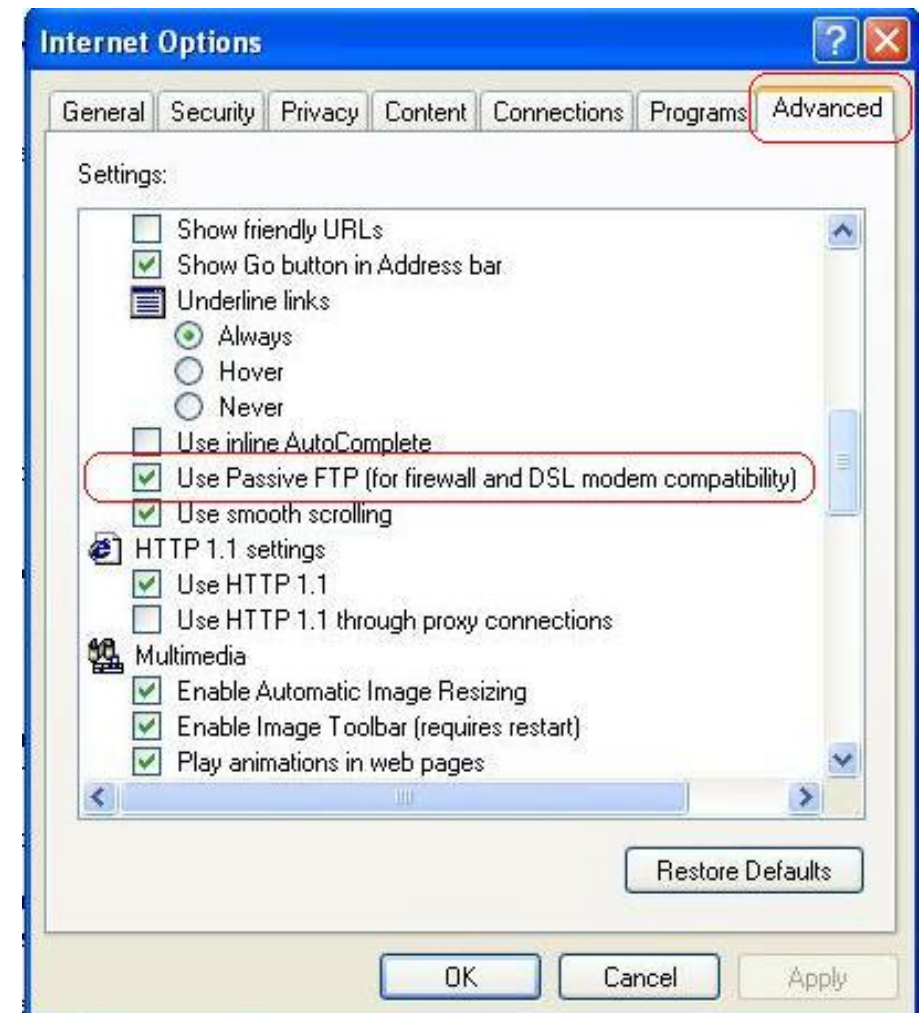




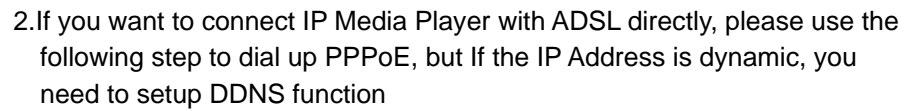
You also can use the following network Architecture: Change the IP Controller to be a real IP Address



Please Setup the Internet Explorer about FTP Client Select the item "Use Passive FTP(for firewall and DSL modem compatibility)"

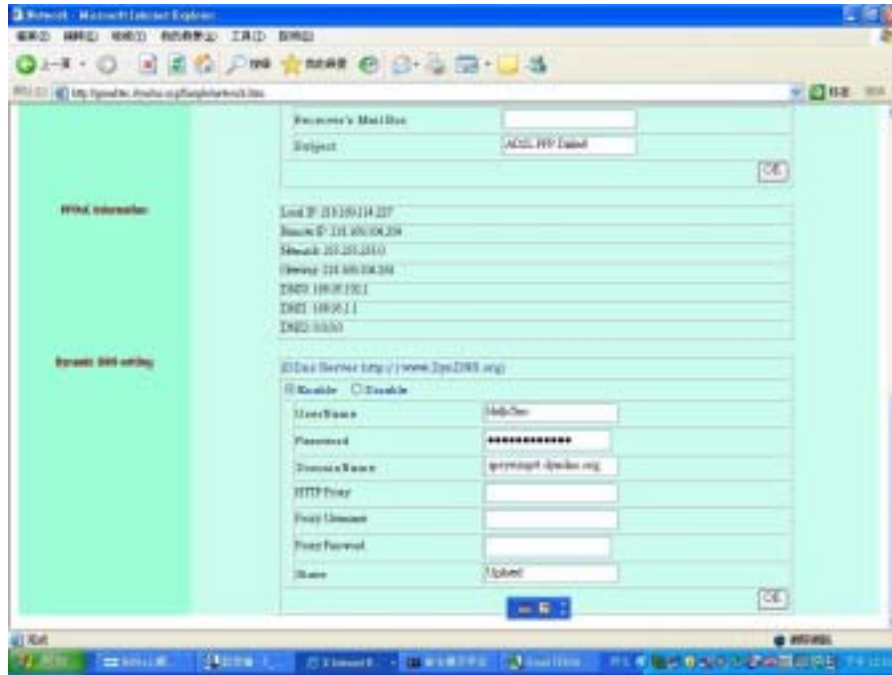


1. We suggest that you can use the router to dial up the ADSL, more information please refer to the Help 4.2

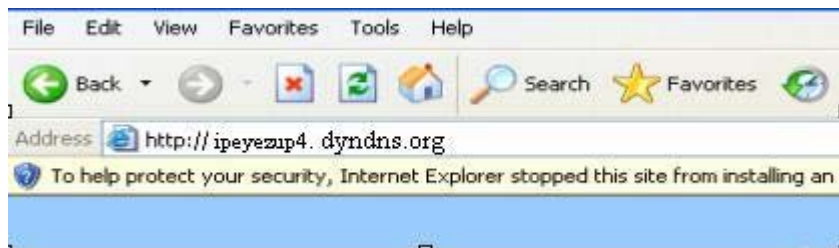




3.DDNS Setup (Please connect to <http://www.dyndns.org/>) to get the DDNS account

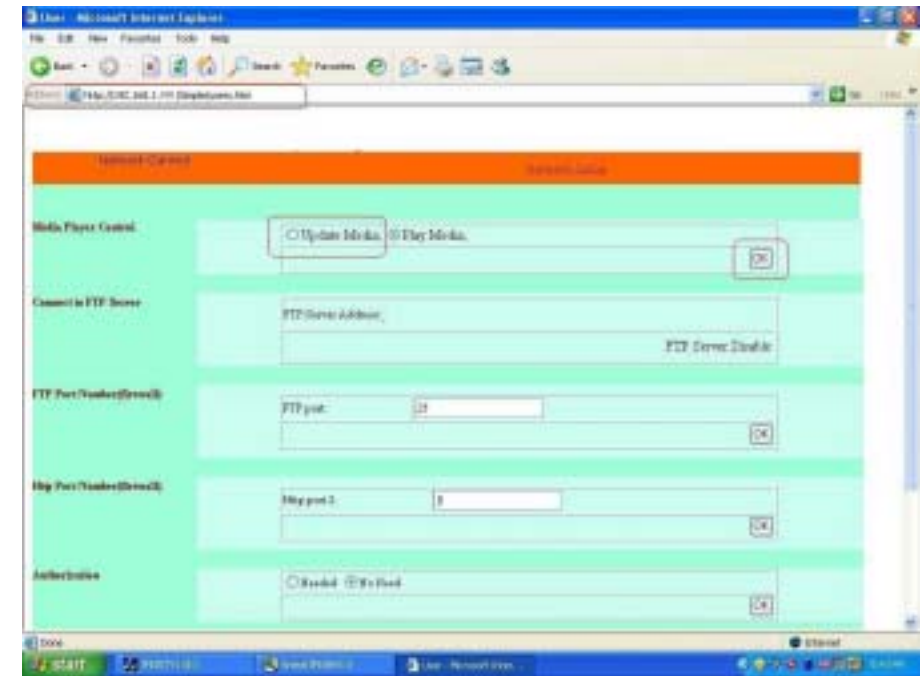


4.In the Remote Computer, please open the Internet Explorer, then type the IP address: <http://ipeyezup.dyndns.org>



## 4.6 How to Upload and Play Media

If you want to upload file into the Media server, please select "Update Media" and click "OK"

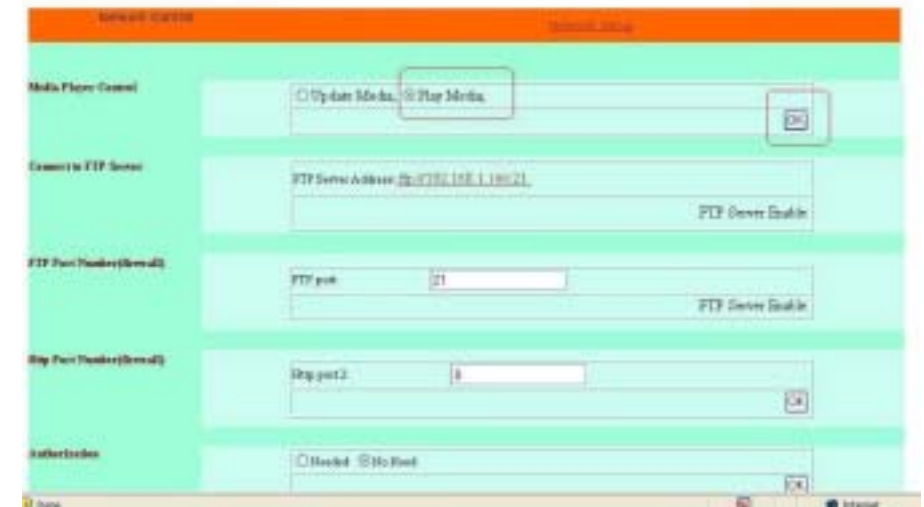


After about 10 seconds, the ftp server <ftp://192.168.1.100:21/> will be enable,

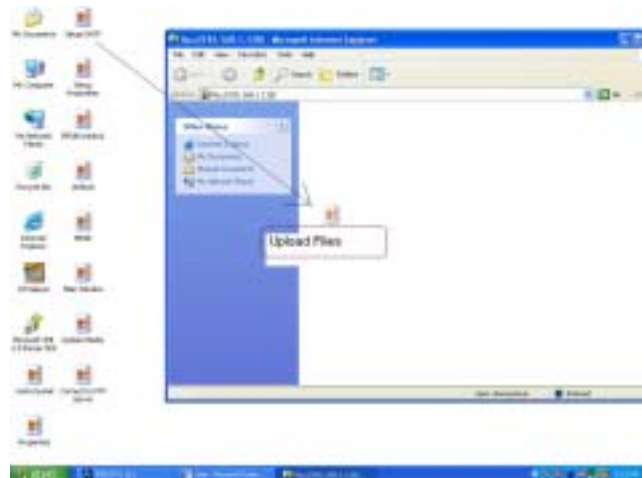
After you upload the files, please select Play Media and click "OK"



Please click the address <ftp://192.168.1.100:21>, your computer will connect to the ftp server, and you can operate the ftp server likes a "Folder", copy, delete, move, and Rename files



Please wait about 20 seconds, the IP Controller will play those files  
In the FTP Folder you can use delete, rename, up load, down load, copy....



## CHAPTER 5

### TROUBLESHOOTING

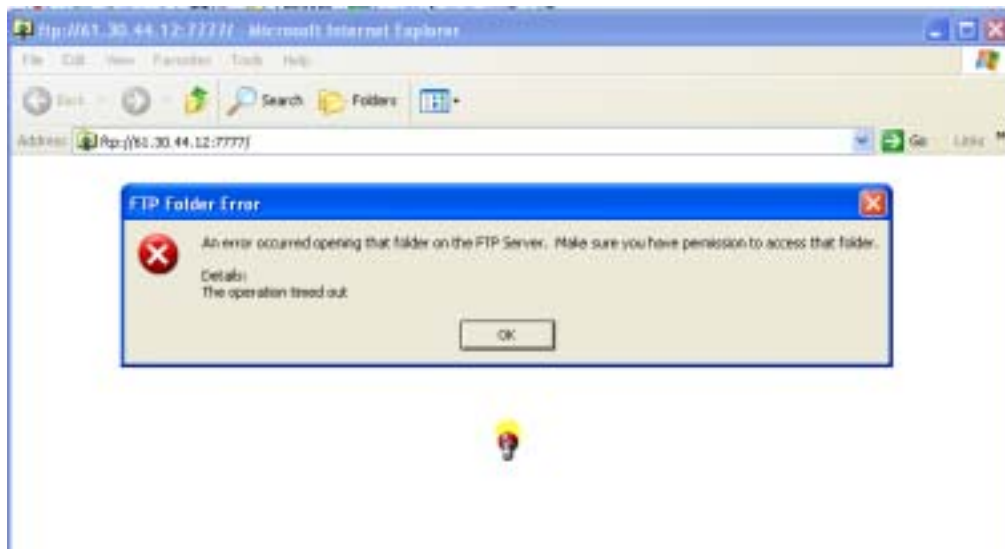
1. If you forget your Password, please press "Default" button about 10 seconds.

**Default User ID : root**

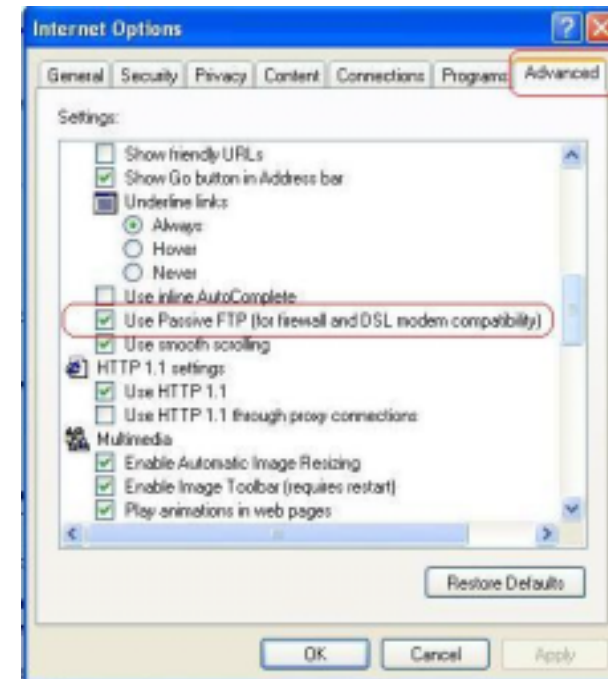
**Default Passwd : admin**

2. If your TV is with both S-video and RCA jacks (composite video), we suggest connecting to the S-video, because S-video provides a better quality signal.

3. Can not connect to FTP Folder or FTP Folder error



Please change the Item Internet Explorer->Internet Options->Advanced->Use Passive FTP (for firewall and DSL modem compatibility) then close the FTP Folder and try one more time



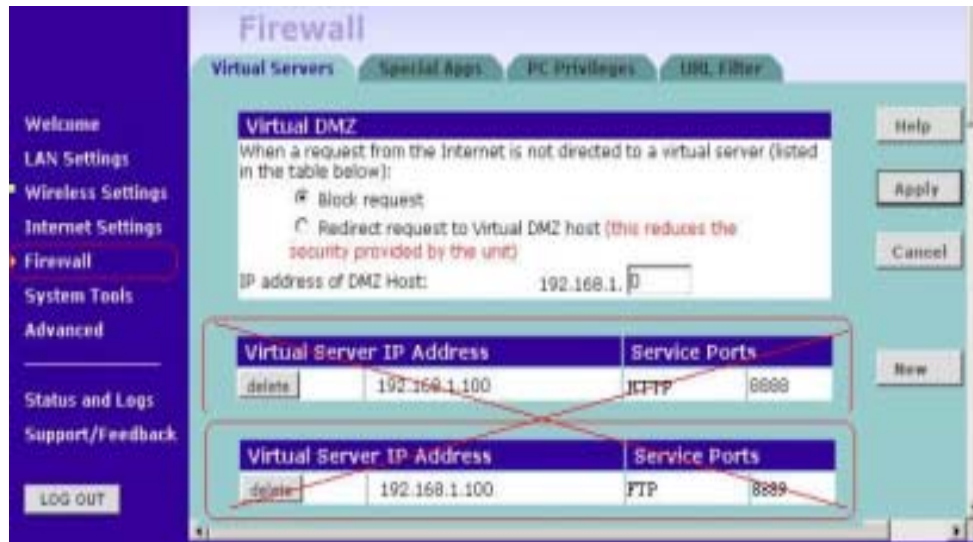
If you also can't connect to the FTP folder, please refer to the **4.3 Limitation of FTP Protocol**

#### 4 About Internet Security

- a. Please often change the User ID and Password.
- b. For high Internet Security, we suggest you use the router with the firewall function,



- c. After you update those files to the Player, please remember to delete the Port forwarding



- d. In the next time, you want to update media files, you can connect to the router (for example: Type the ip address <http://61.30.13.40>) and reopen the FTP port 8889 and Http port 8888 once more.
- e. Although this way is inconvenient, but that can get highest Internet Security.

After about 10 seconds, the ftp server <ftp://192.168.1.100/> has been enabled,

When you need RMA or advanced technical service, please fill in this form as detailed as possible and FAX or Email it to your dealer or service representative.

<b>Product S/N:</b>			
Name:			
TEL No.:		FAX No.:	
E-mail address:			
Full Address:			
Other add-on cards:			
Monitor:	Horizontal Freq.:	Hz to	KHz
	Vertical Freq.:	Hz to	Hz
Problem description:			