

# Installation of USB-NetLink cable under Win98/Me

## ◆ Step A: To install the driver of USB-NetLink cable

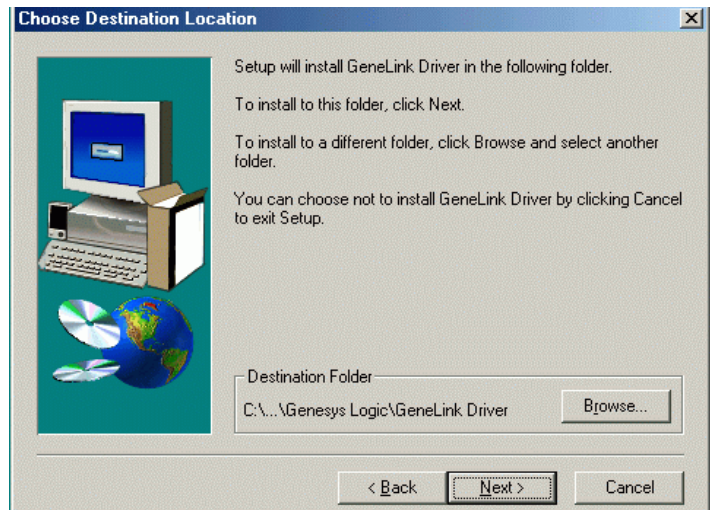
### **Step A1.**

Please insert the driver disk into your computer, and execute “**Setup.exe**” in the disk. Click “**Next**” to continue.



### **Step A2.**

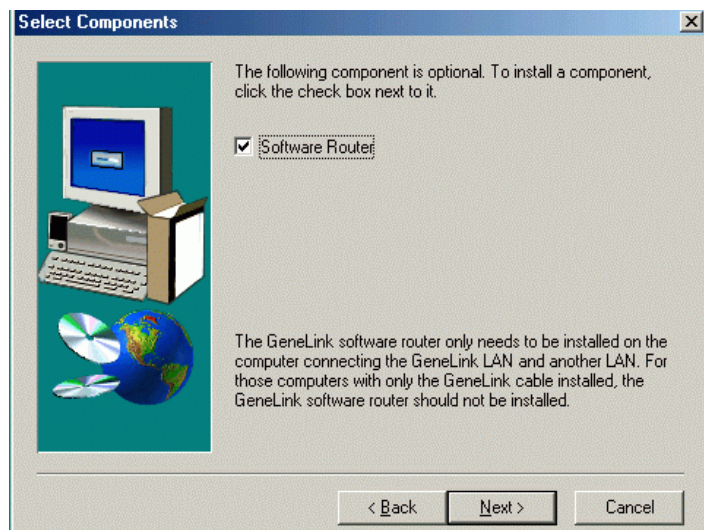
Click “**Next**” to continue.



### Step A3.

Select **"Software Router"**. Then, click **"Next"** to continue.

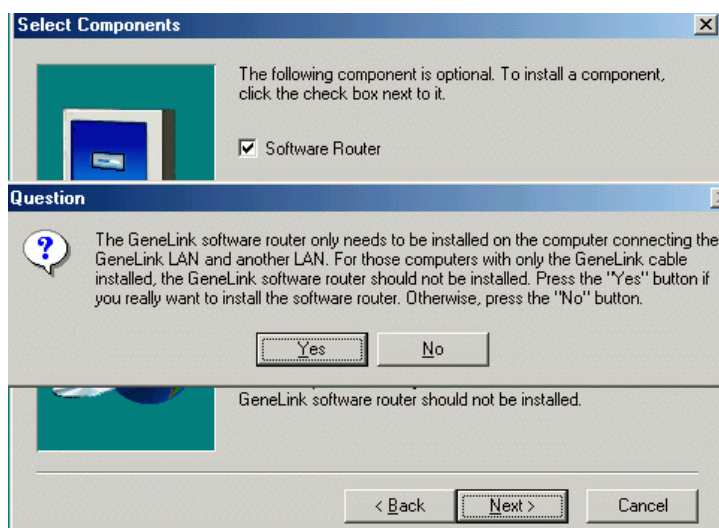
**Note:** You cannot see this screenshot or do not click the **"Software Router"**, if the PC is Client.



### Step A4.

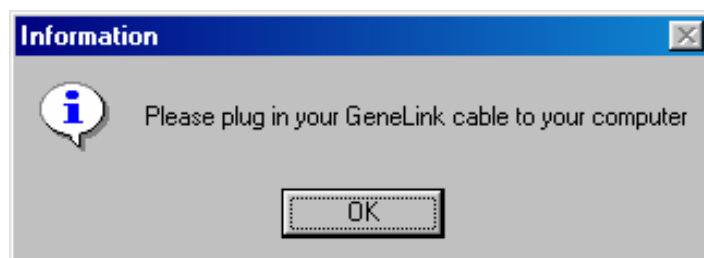
Click **"Yes"** to continue.

**Note:** You cannot see this screenshot if the PC is Client.



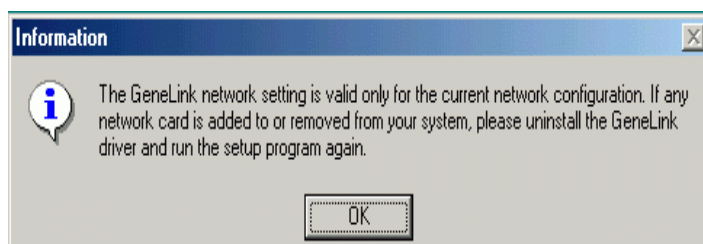
### Step A5.

Plug the USB-NetLink cable into the downstream port located in the back of your computer or USB HUB port. Then, click **"OK"** to continue.



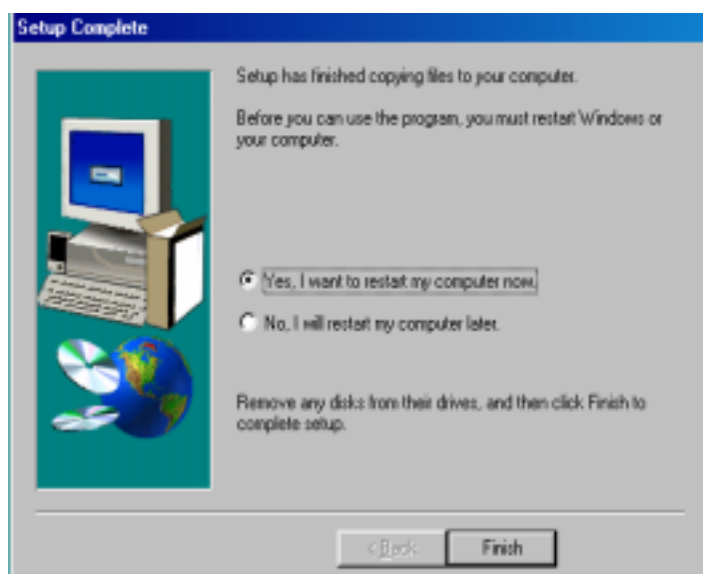
### **Step A6.**

Click “OK” to continue.



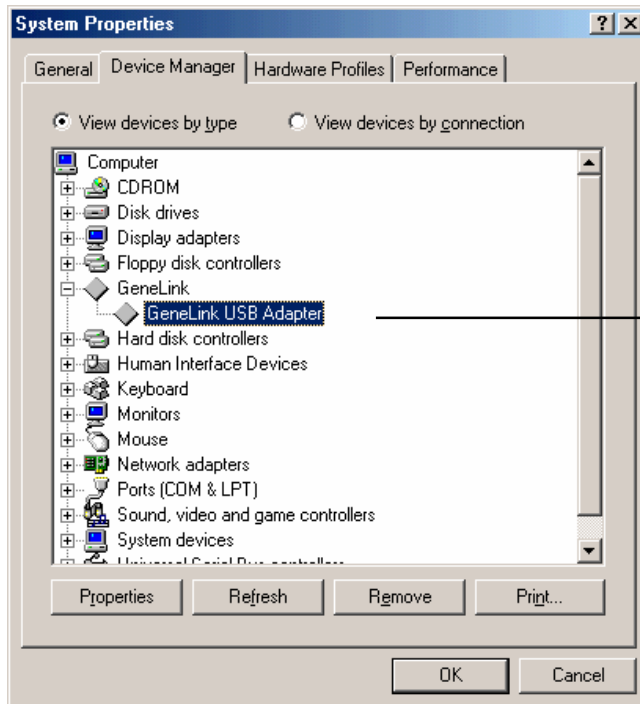
### **Step A7.**

Select “Yes, I want to restart my computer now”. Then, click “Finish” to complete setup.



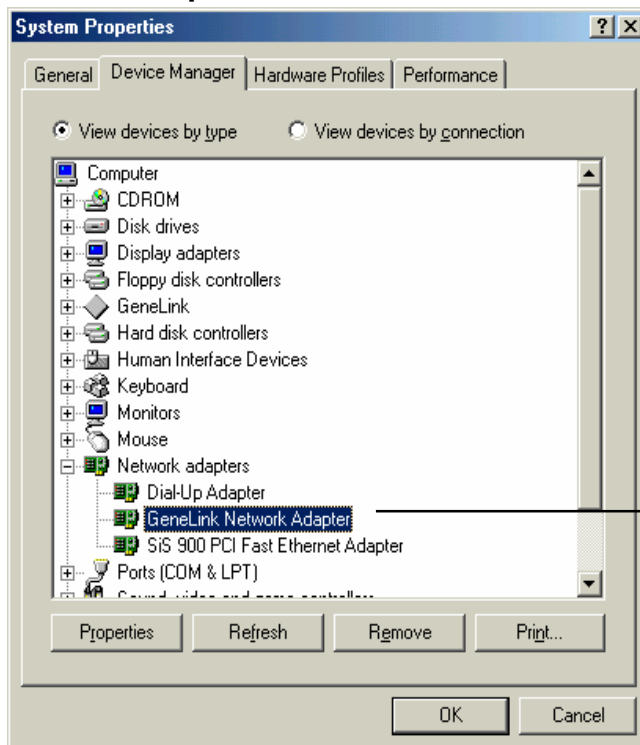
◆ **To make sure the USB-NetLink cable has installed successfully**

(A) Please move the cursor to **“My computer”** → **“Control Panel”** → **“System”** → **“Device Manager”**. Double click **“GeneLink”** and it will show a new direction **“GeneLink USB Adapter”**.



**GeneLink USB Adapter.**

(B) And under the same window, double click **“Network adapters”**. It will show **“GeneLink Network Adapter”**.



**GeneLink Network Adapter.**

## ◆Step B:

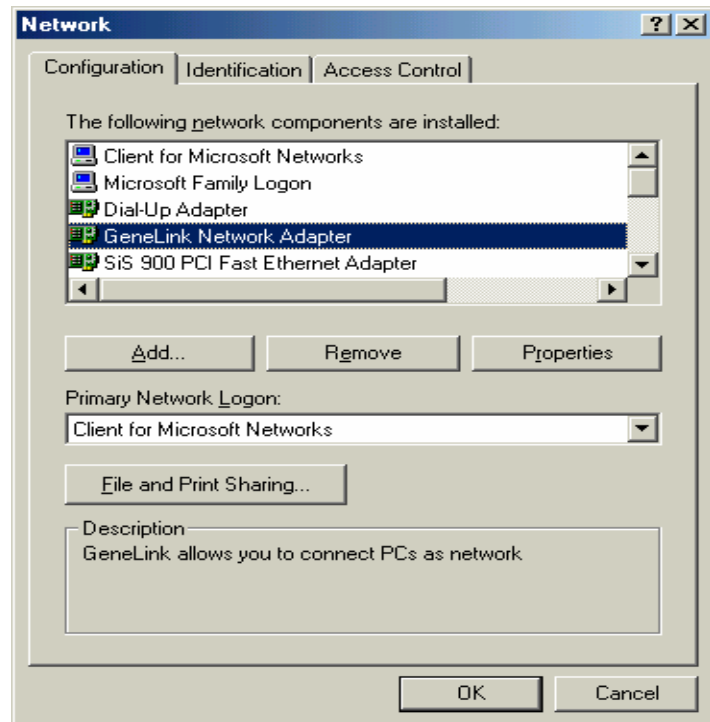
To check and to set the Network components have installed successfully

Please move the cursor to “**Network Neighborhood**”. Click the mouse right button. It will show a dialog then click “**Properties**”. It will show a dialog “**Network**”.

### When your PC is Host

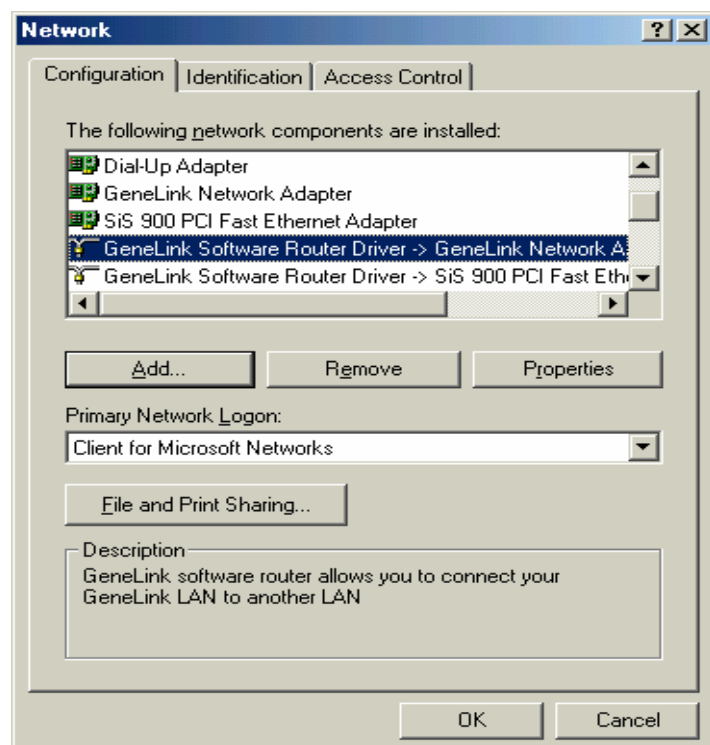
#### **Step B1.**

Select “**Configuration**” and check:  
“**GeneLink Network Adapter**”.



#### **Step B2.**

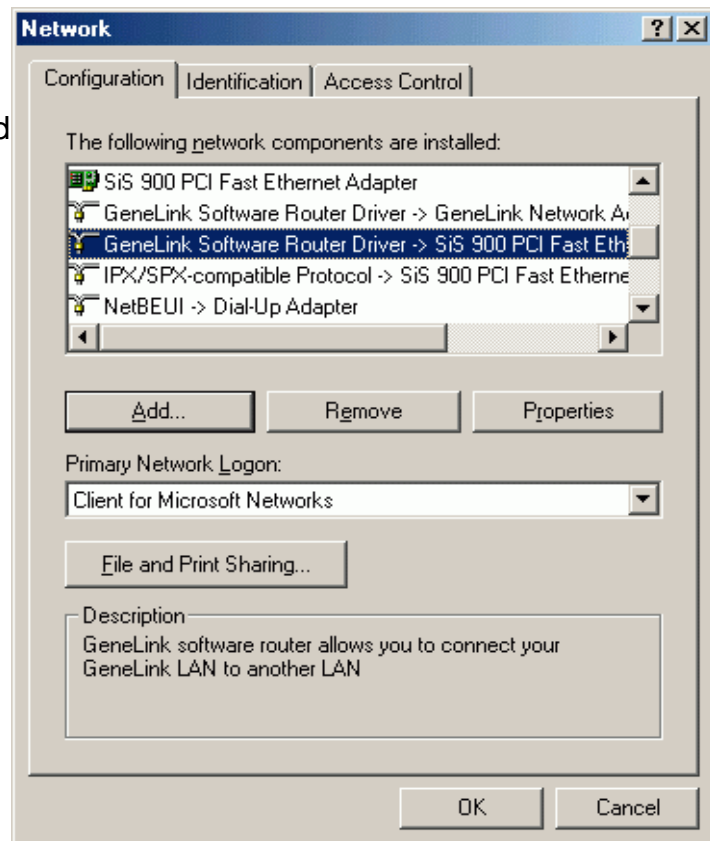
“**GeneLink Software Router Driver**  
→ **GeneLink Network Adapter**”.



### Step B3.

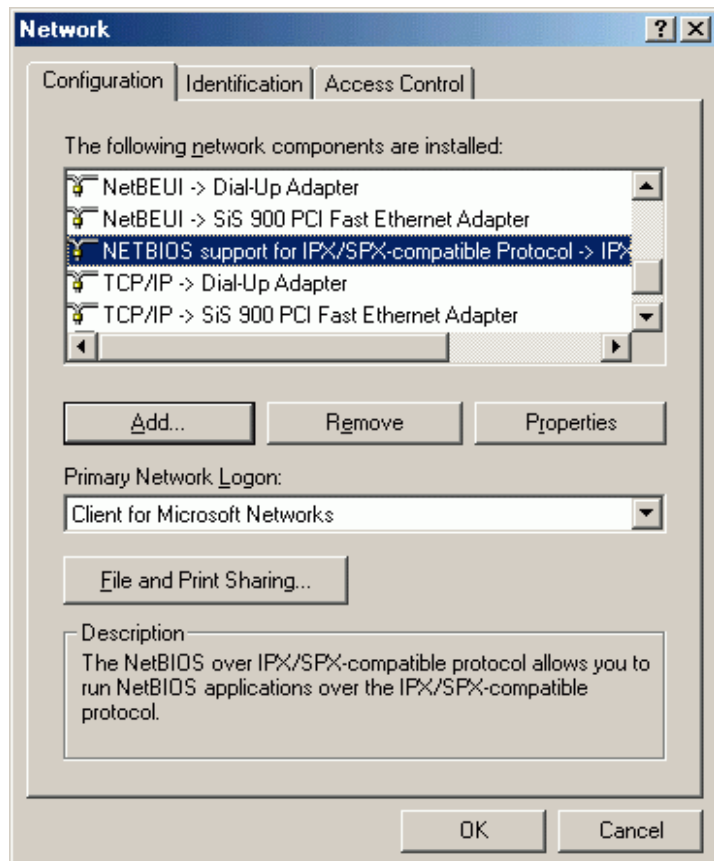
**“GeneLink Software Router Driver  
→ SiS 900 PCI Fast Ethernet”.**

\*(The name will be changed that depend  
on your own PCI Fast Ethernet)



### Step B4.

**“NETBIOS support for IPX/SPX-  
compatible Protocol -> IPX/SPX-  
compatible Protocol”.**

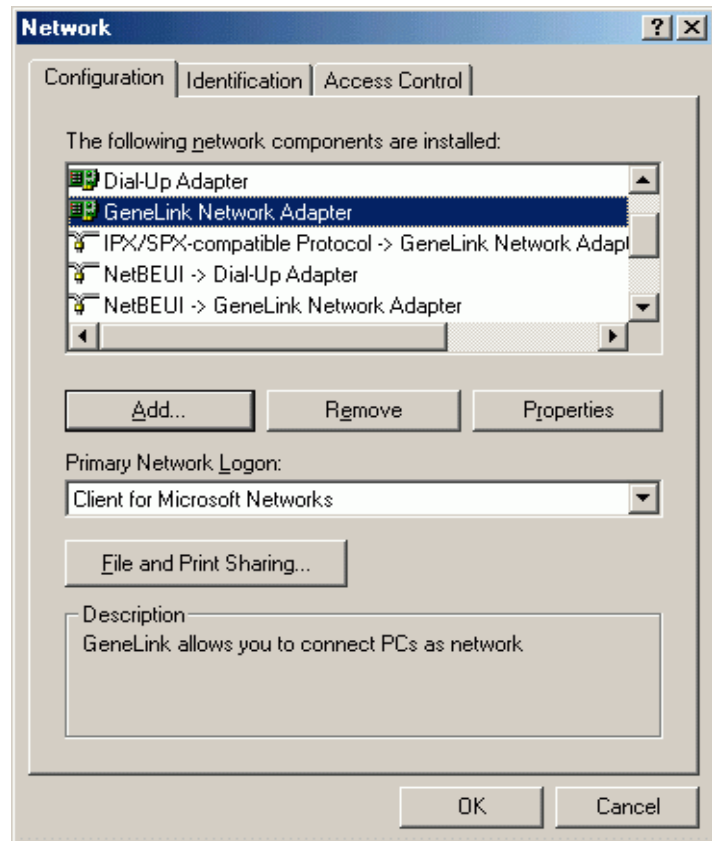




## **When your PC is Client**

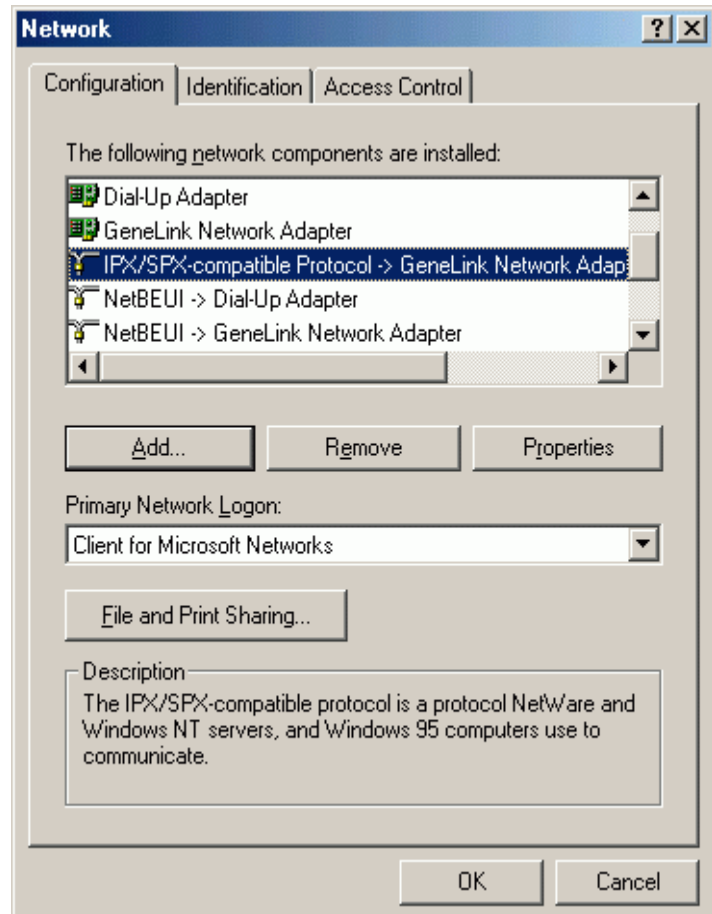
### ***Step B5.***

Select “**Configuration**” and check:  
“**GeneLink Network Adapter**”.



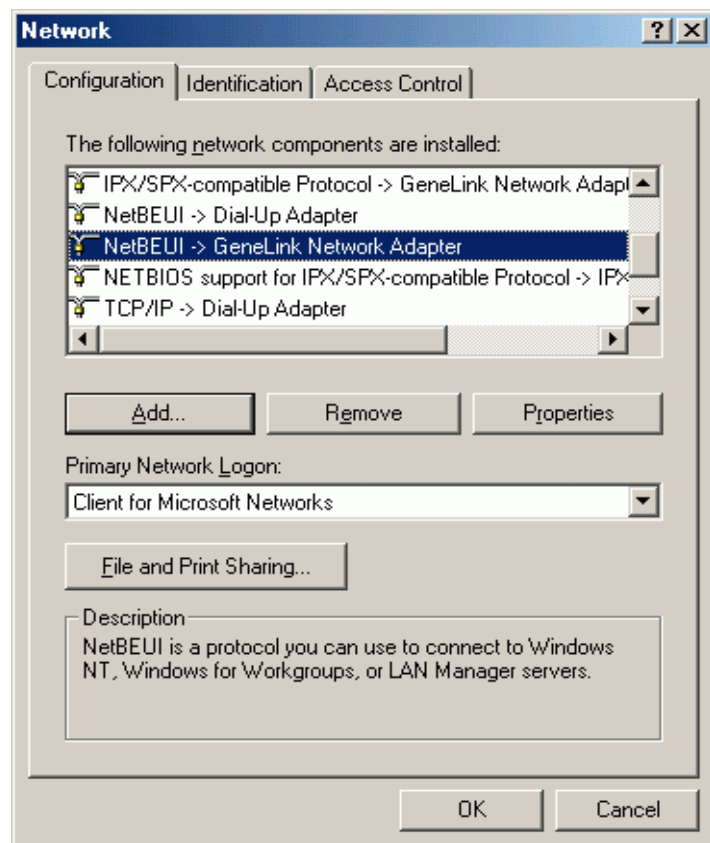
### ***Step B6.***

“**NETBIOS support for IPX/SPX-compatible Protocol -> IPX/SPX-compatible Protocol**”.



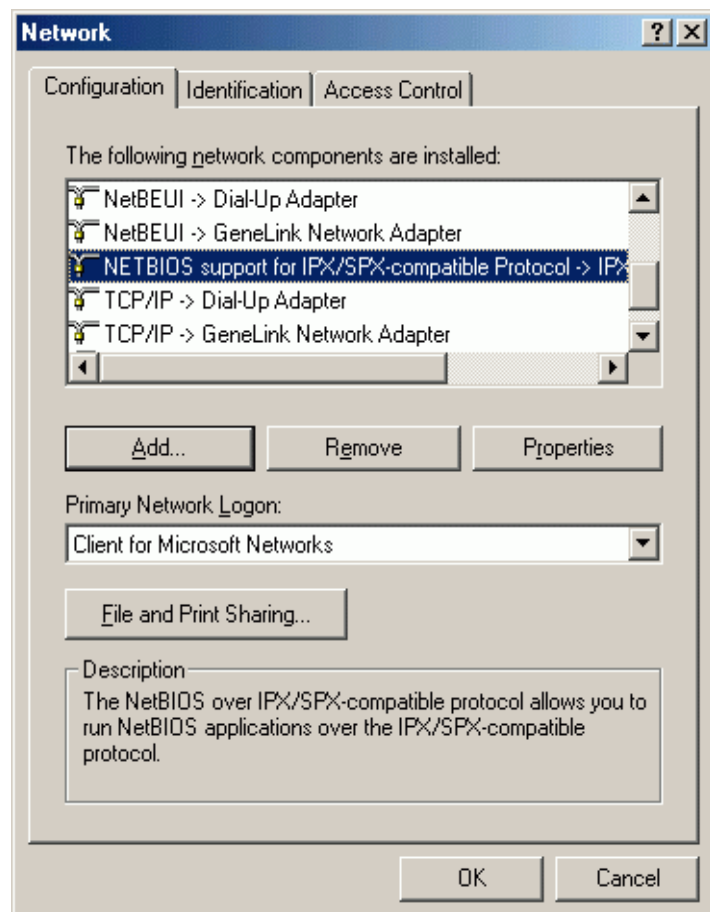
### Step B7.

“NETBEUI ->GeneLink Network Adapter”.



### B8.

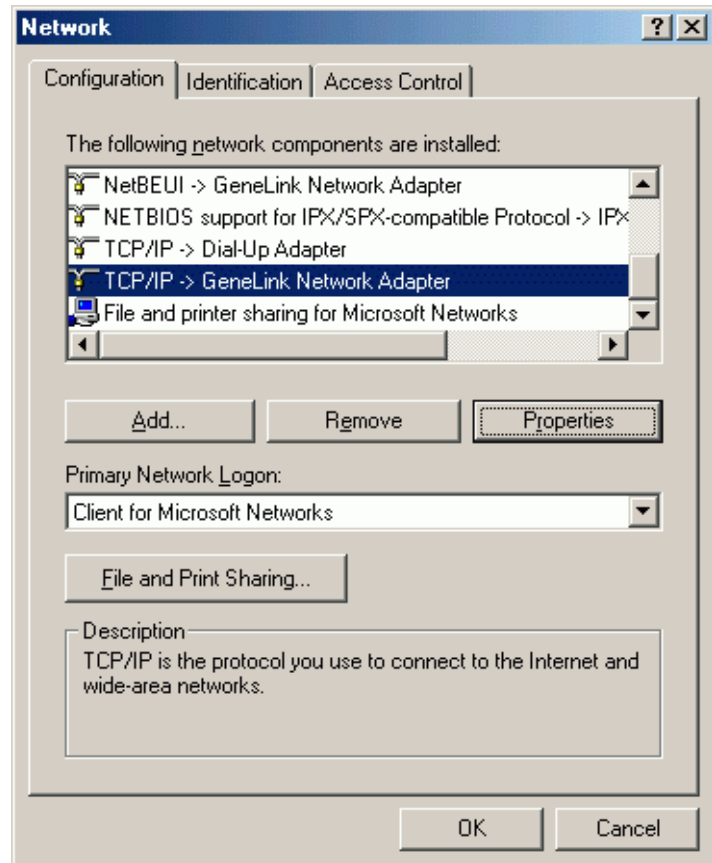
“NETBIOS support for IPX/SPX-compatible Protocol -> IPX/SPX-compatible Protocol”.





### Step B9.

“TCP/IP -> GeneLink Network Adapter”.

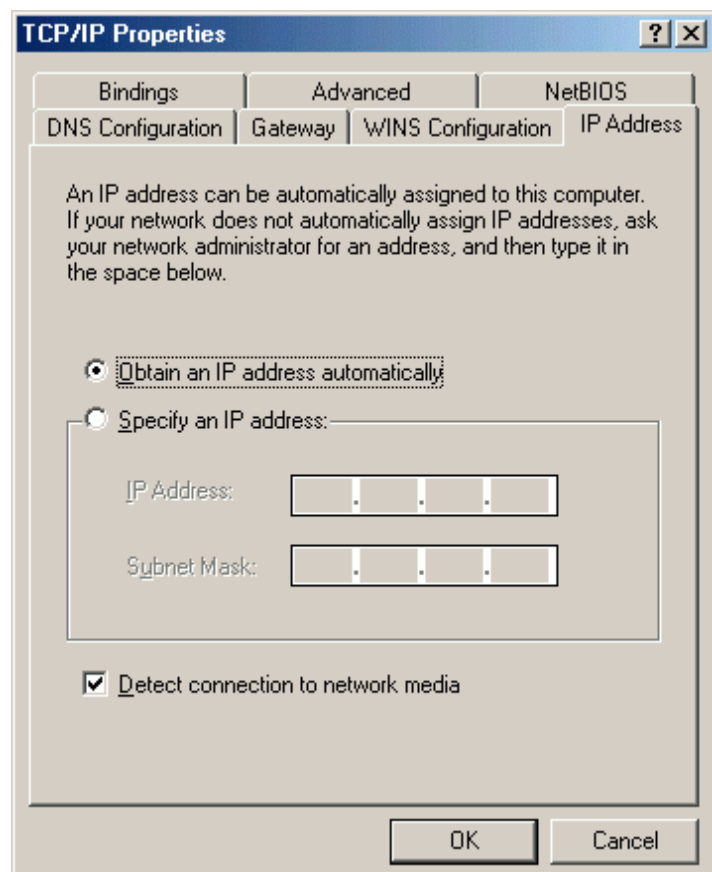


### B10.

To set up the “TCP/IP -> GeneLink Network Adapter”, please select “Properties” and “IP Address”.

Then select “Obtain an IP address Automatically”.

(Ref Figure B-10)



### Step B11.

Select “**Gateway**” to add new gateway.

The screenshot shows the 'TCP/IP Properties' dialog box with the 'Gateway' tab selected. The 'Bindings' tab is also visible. The 'Gateway' tab contains a text box for 'New gateway:' with the value '192.168.' and an 'Add' button. Below this is a list box for 'Installed gateways:' which is currently empty, with a 'Remove' button next to it. At the bottom are 'OK' and 'Cancel' buttons.

Bindings Advanced NetBIOS  
DNS Configuration Gateway WINS Configuration IP Address

The first gateway in the Installed Gateway list will be the default.  
The address order in the list will be the order in which these machines are used.

New gateway:  
192.168. . Add

Installed gateways:  
Remove

OK Cancel

### Step B12.

Select “**DNS Configuration**” and “**Enable DNS**”. Then, please fill in the “**Host**” and add the “**DNS Server Search Order**”. Click “**OK**” to complete the TCP/IP setting.

The screenshot shows the 'TCP/IP Properties' dialog box with the 'DNS Configuration' tab selected. The 'Enable DNS' radio button is selected. The 'Host' text box contains 'ACC' and the 'Domain' text box is empty. Below these are two sections: 'DNS Server Search Order' and 'Domain Suffix Search Order'. The 'DNS Server Search Order' section has a text box with '139.175.' and an 'Add' button. The 'Domain Suffix Search Order' section has two empty text boxes, each with an 'Add' button. At the bottom are 'OK' and 'Cancel' buttons.

TCP/IP Properties

Bindings Advanced NetBIOS  
DNS Configuration Gateway WINS Configuration IP Address

☐ Disable DNS  
☒ Enable DNS

Host: ACC Domain:

DNS Server Search Order

139.175. . Add

Remove

Domain Suffix Search Order

Add

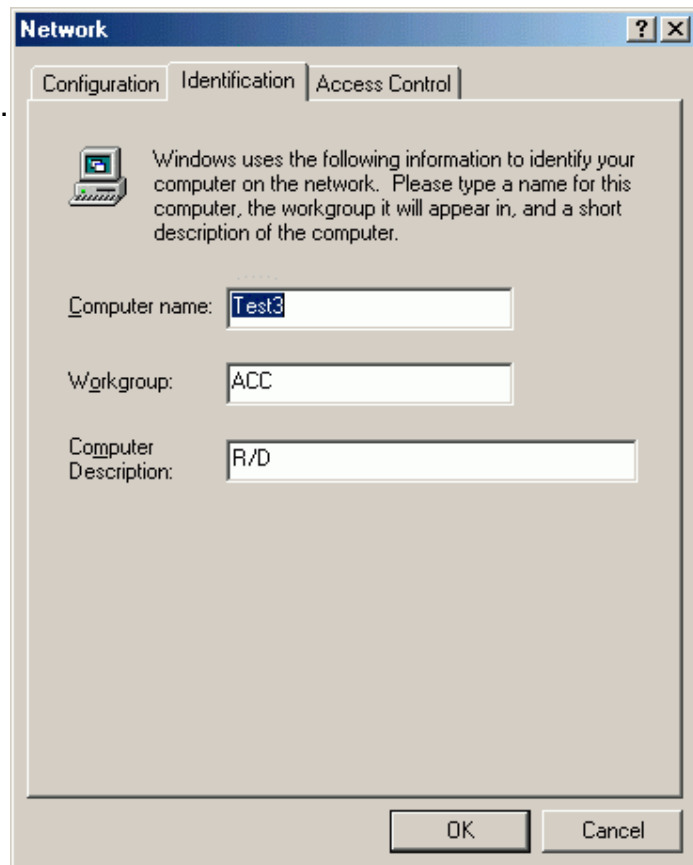
Remove

OK Cancel

### Step B13.

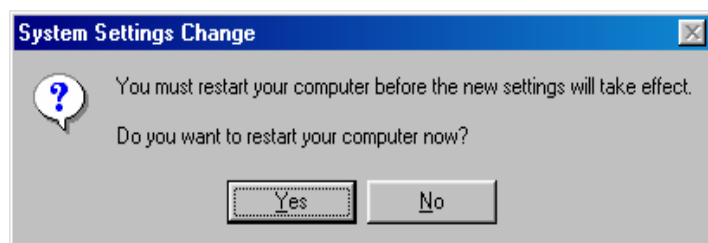
Select “**Identification**”. Please fill in the “**Computer name**” and “**Workgroup**”. (Ref Figure B-13)

**Note:** The “**Workgroup**” name must same as the Host.



### Step B14.

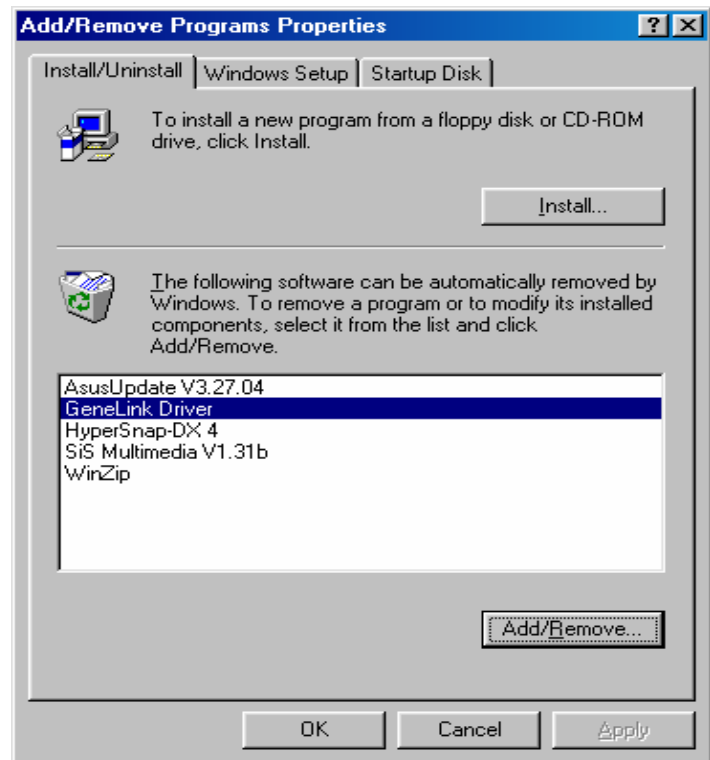
Click “**Yes**” to restart your system and complete the network setup.



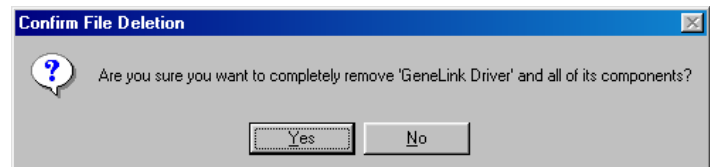
## ◆ Uninstallation

If you want to remove the driver of USB-NetLink cable, you can move the cursor to “**My computer**” → “**Control Panel**” → “**Add/Remove Programs**”. It will show a dialog then select “**Install/Uninstall**”

1. Select “**GeneLink Driver**” from the list. Click “**Add/Remove**” to uninstall the driver.



2. Click “**Yes**” to continue.



3. Select “**Yes, I will to restart my computer now**”. Click “**Finish**” to complete removing the driver of USB-NetLink cable.

