

How to install in Windows® 98

Please follow the steps outlined below for first time installation of the USB Omni floppy disk drive. After a successful installation, you can re-connect the USB floppy disk drive and the system should automatically recognize the attached floppy device.

Install steps:

1. Turn on the computer and enter into Windows® 98.
2. The system will automatically detect the new hardware. A window shown on below will pop up:



3. Once the **[Add New Hardware Wizard]**. Window appears, Select **[Search for the best driver for your device]**, click **[Next]**.



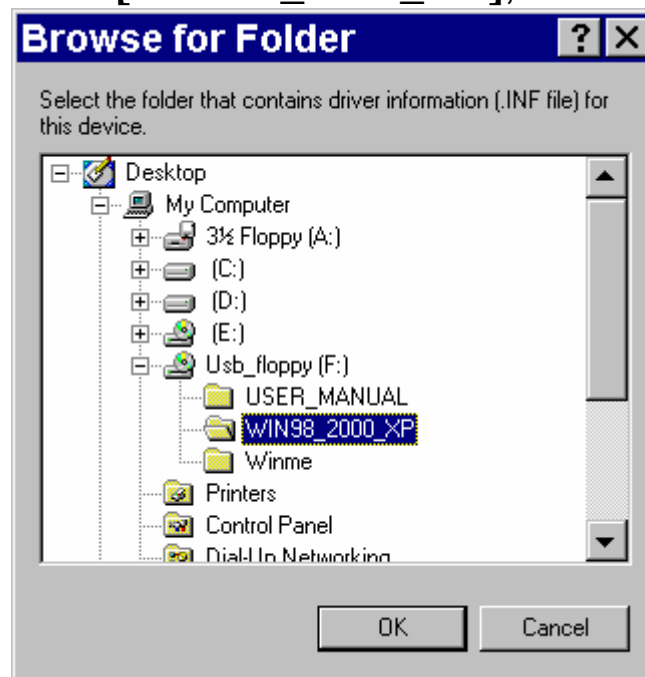
4. Insert the installation CD into the CD-ROM and click **[Next]**. Select **[Specify a location:]** and click **[Browse]**.



5. Select **[Cancel]**.



6. Select the driver disk **[WIN98_2000_XP]**, and click **[OK]**



7. Check the path as follows and click **[Next]**.



8. Click **[Next]**.



9. Click [**Finish**] and installation process complete.



10. You can check the driver in [**System**] under [**Control Panel**]. The driver [**Candy Technology USB Floppy**] icon is shown below:

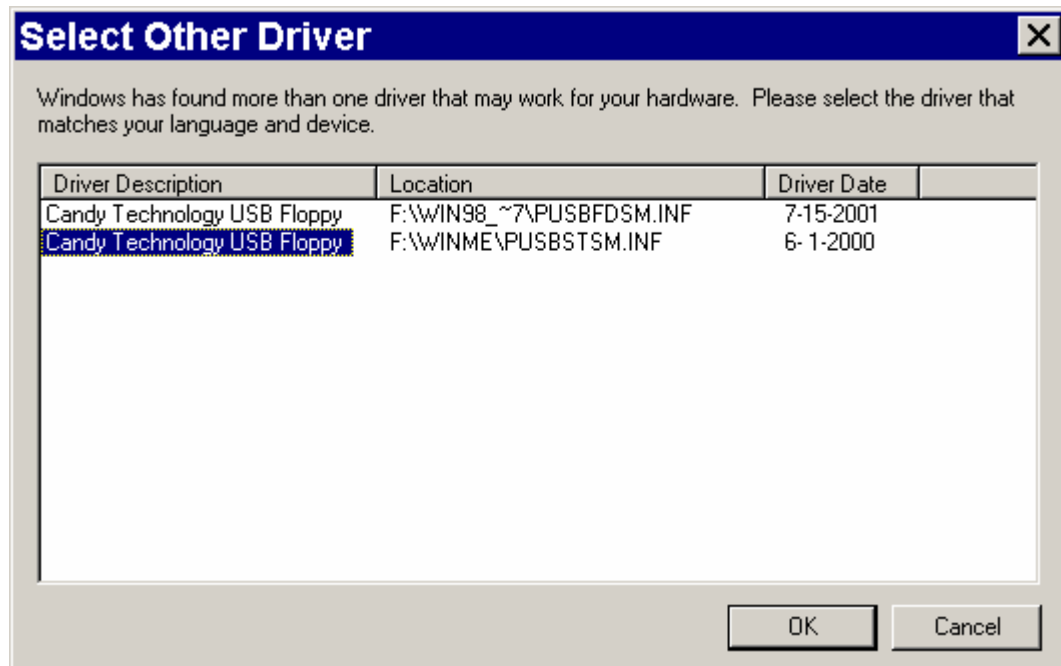


How to install in Windows® ME

1. Turn on the computer and enter into Windows® ME.
2. The system will automatically detect the new hardware. A window shown below will pop up:
3. Once the **[Add New Hardware Wizard]** window appears. Put the driver disk into your CD-ROM DRIVE, then Select **[Automatic search for a better driver]**, and click **[Next]**.



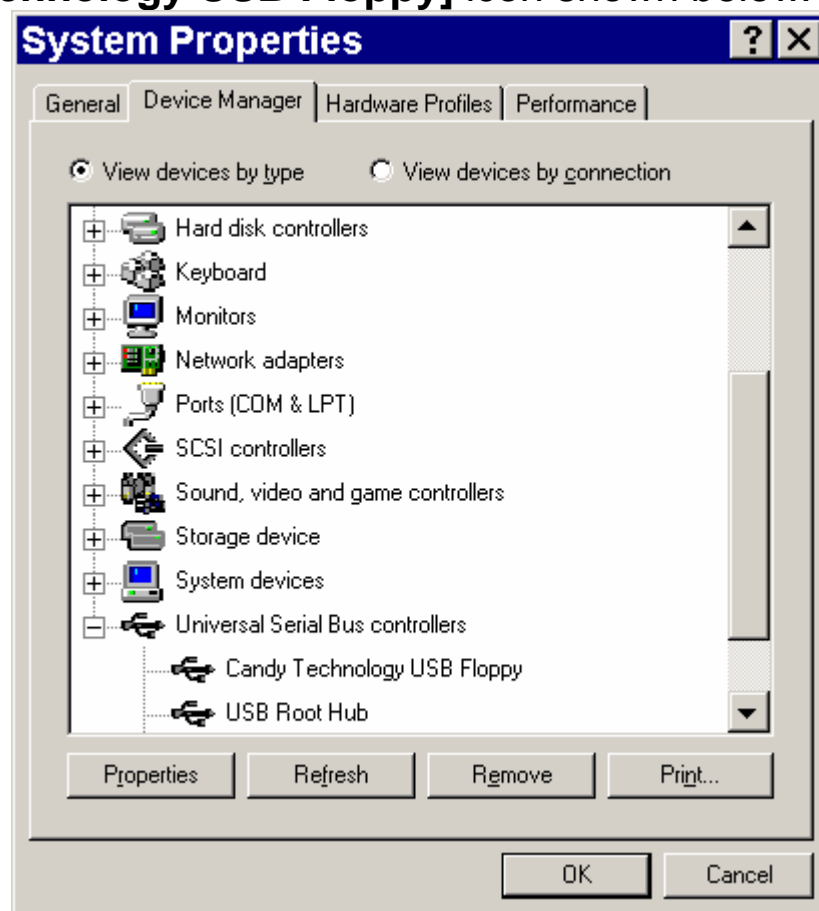
4. Select the driver file [**F:\WINME\PUSBSTSM.INF**], and click [**Next**]. The letter F: will be substituted for the actual drive letter of your computer CD-ROM DRIVE.



5. Click [**Finish**] and the installation process is complete.



6. You can check the driver in **[System]** under **[Control Panel]**. The **[Candy Technology USB Floppy]** icon shown below.



How to install in Windows® 2000

1. Turn on the computer and enter into Windows® 2000.
2. The system will automatically detect the new hardware. A window shown on below will pop up:



3. click **[Next]**.



4. Select **[Search for a suitable driver for my device]**, then click **[Next]**.



5. Select **[Specify a location]**, then click **[Next]**.

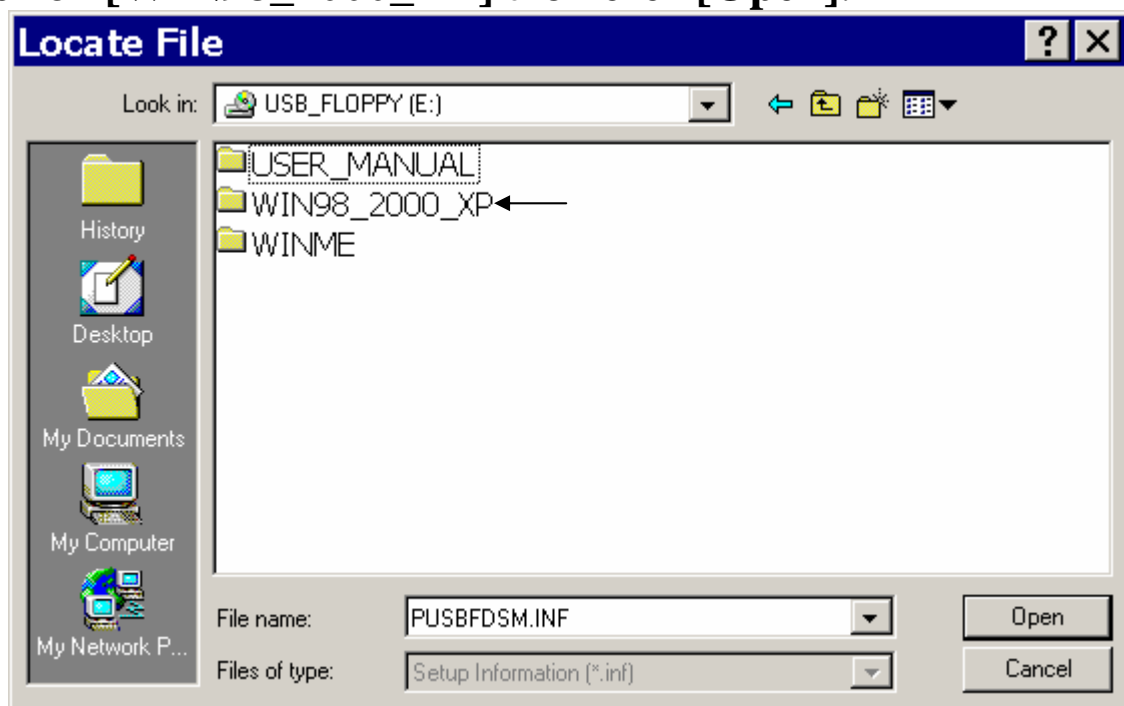


6. Put the driver disk into your CD-ROM, then click [**Browse**]

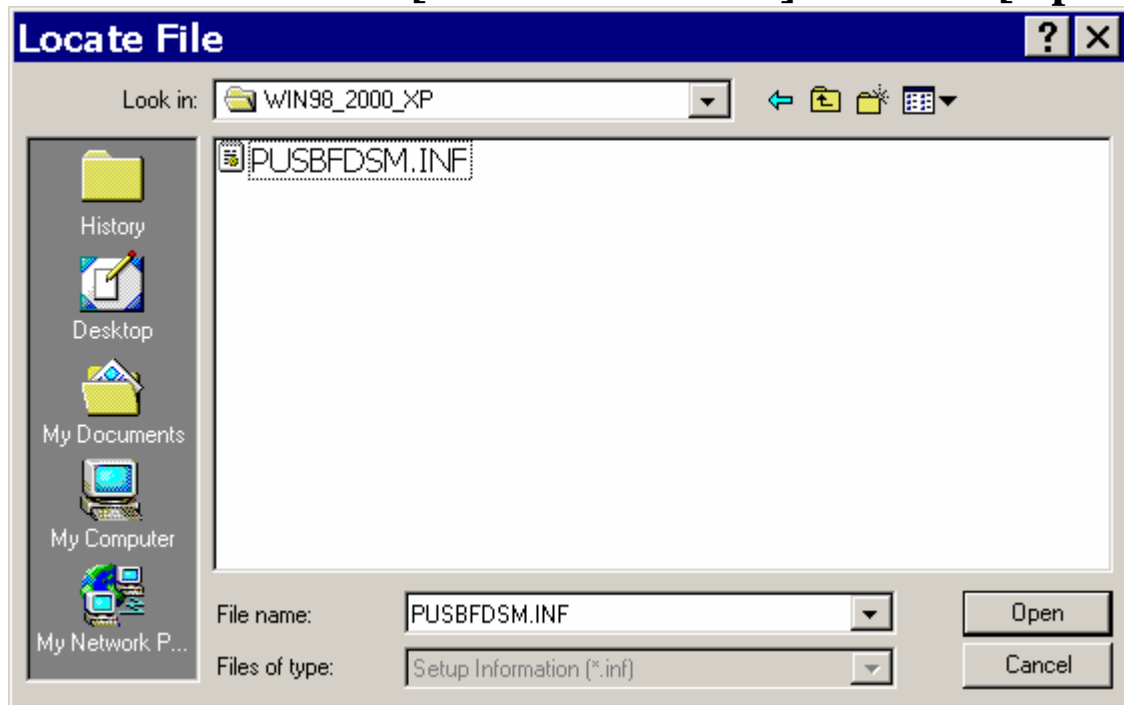


Type in the actual drive letter of your CD-ROM DRIVE.

7. Click on [**WIN98_2000_XP**] then click [**Open**].



8. Check the file as follows [**PUSBFDSM.INF**] then click [**Open**].



9. Click [**OK**].



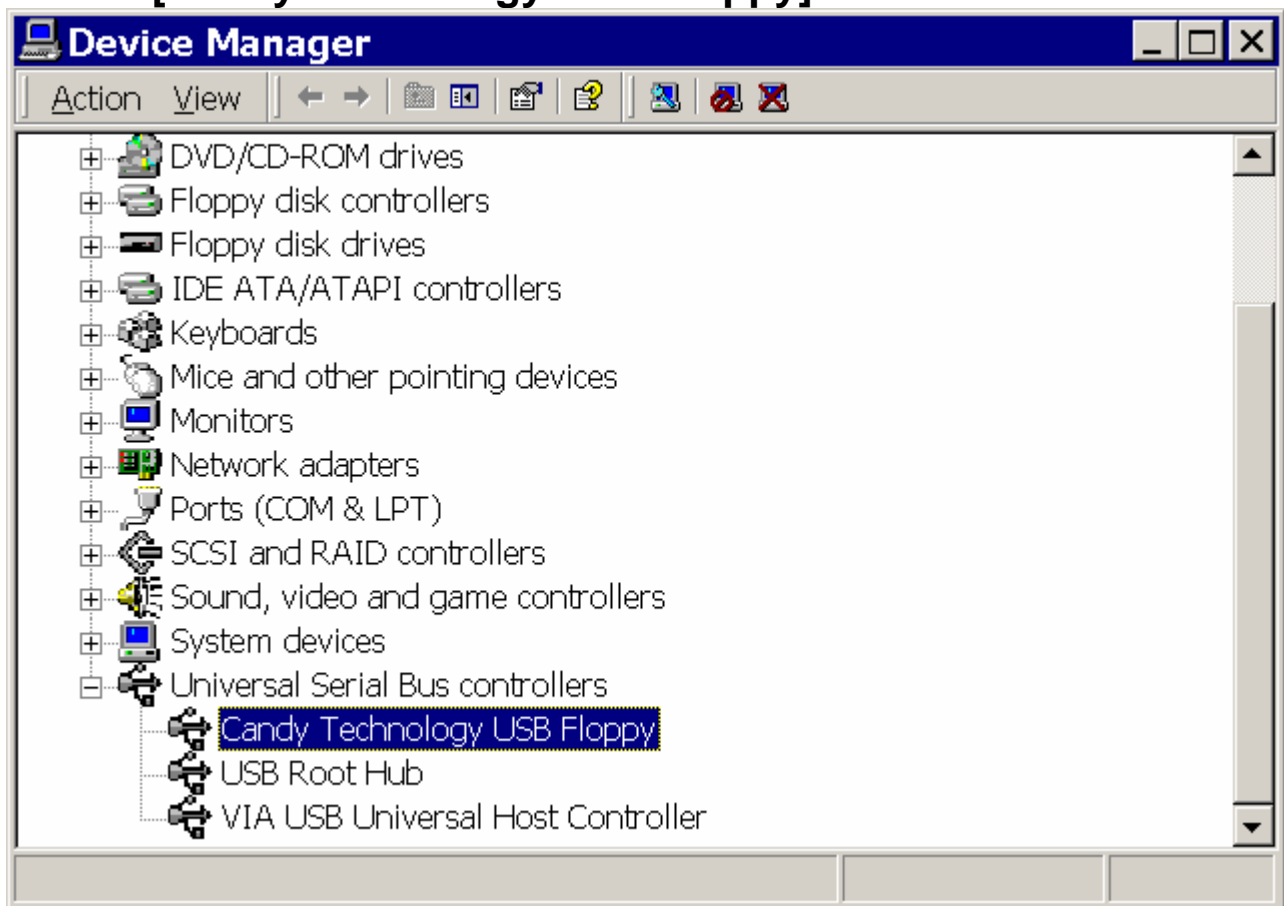
10. Click **[Next]**.



11. Click **[Finish]** and the installation process is complete.



12. You can check the driver in **[System]** under **[Control Panel]**. The driver **[Candy Technology USB Floppy]** icon is shown below:

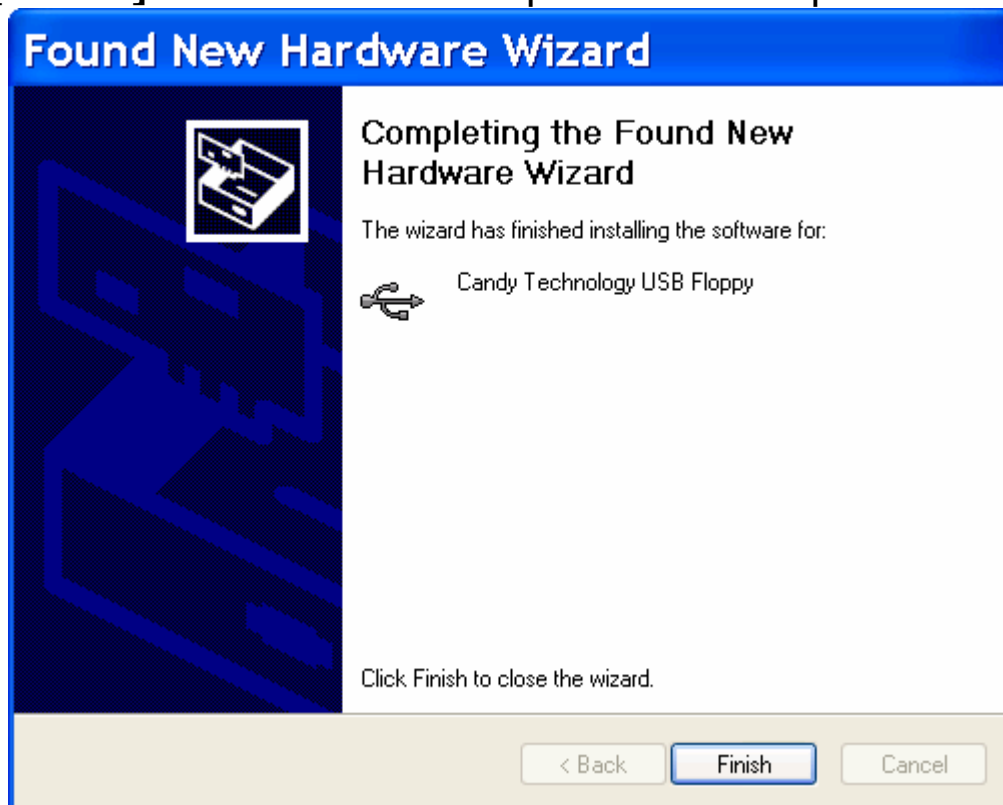


How to install in Windows® XP

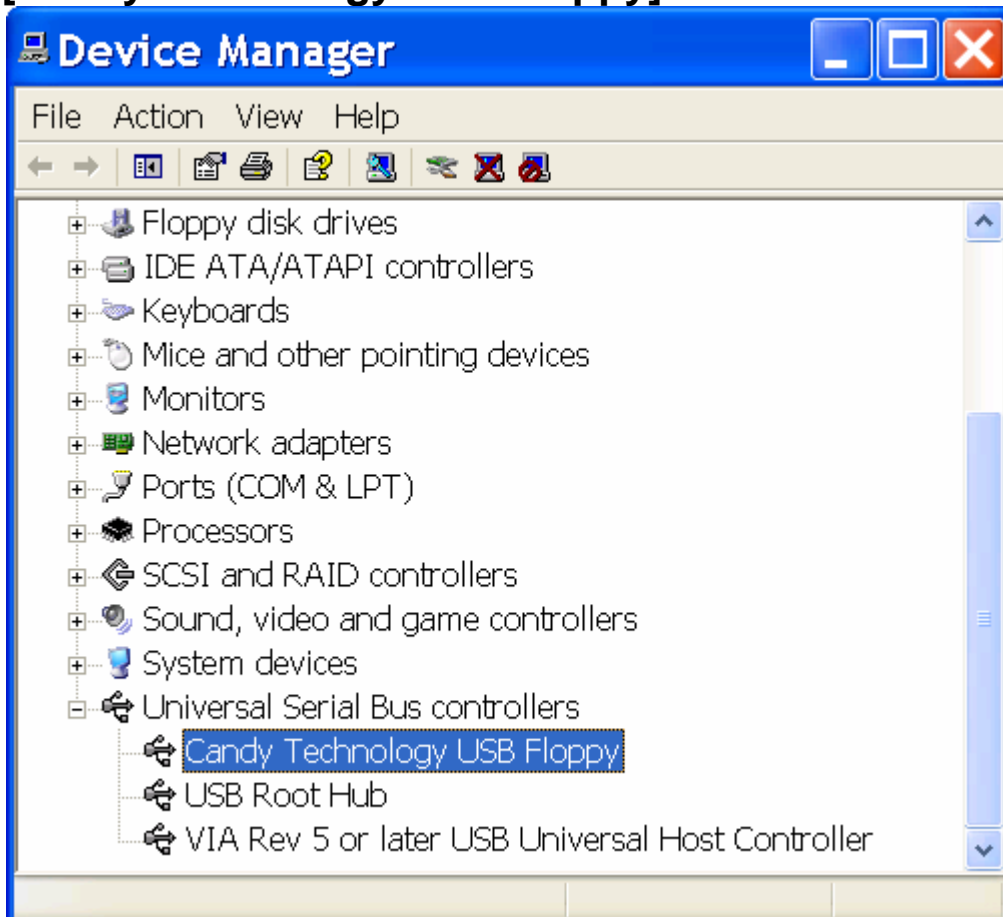
1. Turn on the computer and enter into Windows® XP.
2. The system will automatically detect the new hardware. A window shown below will pop up:
3. Select **[Install the software automatically]**, then click **[Next]**.



5. Click **[Finish]** and the installation process is complete.



6. You can check the driver in **[System]** under **[Control Panel]**. The driver **[Candy Technology USB Floppy]** icon is shown below:



How to unplug the USB cable

1. Double click the icon shown on the right circled in red:



2. Select **[Stop]**.



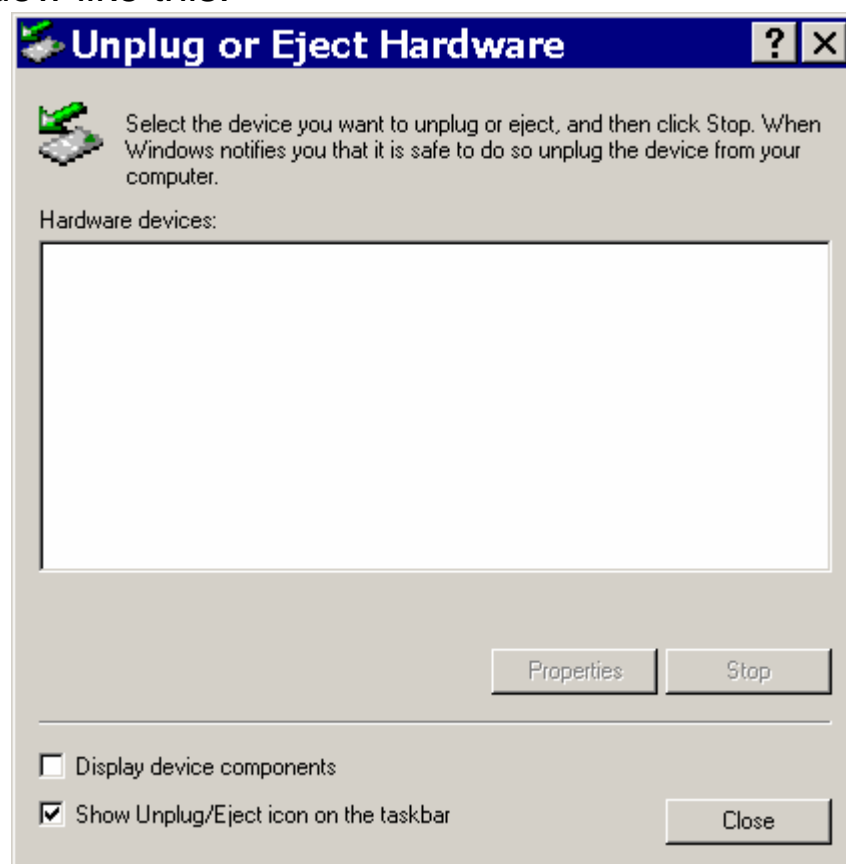
3. Click **[OK]**.



4. The system will pop up the window similar to below. Press **[OK]**.



5. Once the **“Unplug or Eject Hardware”** task is complete, you will see a window like this.



6. When you unplug USB cable, the system will show a window with a check-box. Check the box and click **[OK]**.



How to install in iMac PC

Note:

1. If you want to disable the USB Omni Floppy disk drive, please eject the floppy diskette before pulling out the USB cable that is connected to the iMac PC.
2. iMAC OS 8.6 requires a driver to be downloaded from their from their web site, but OS 8.6 later provides a default driver. Follow the below instructions to access the web site.

Software Installation:

1. First, visit [//developer.apple.com/hardware/usb/](http://developer.apple.com/hardware/usb/) to download the USB iMAC drivers.
2. After entering the web site, please select **“Download the USB Adapter Card Support (1.3.5)”**
3. When the download is complete, select **“USB Card Support 1.3.5.smi”** which appears on your screen.
4. Follow the instructions to connect the device.