

Quick Start

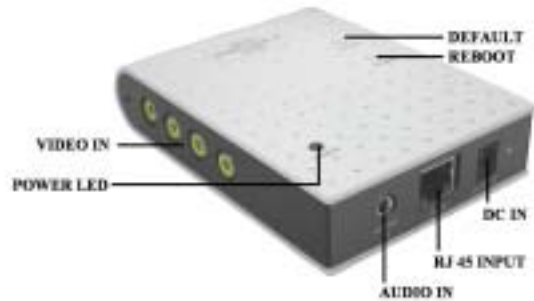
If you have ever used Grand IP Video Sever, please to delete “**KENCAPI Class**” first

C:\Windows\Downloaded Program Files\KENCAPI Class

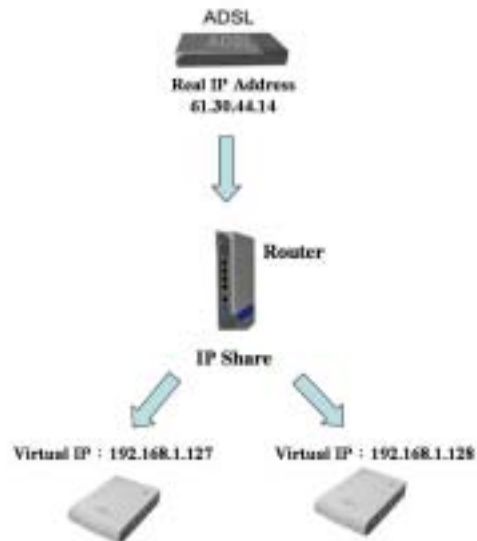
Step 1 : Please connect power adapter to Grand IP Video Server 4 Port first.

Step 2 : Connect to video / audio connector of video / audio source.
(Camera / DVD player / mp3 / microphone)

Step 3 : Connect to video / audio input of video / audio source (monitor / DVR) for monitoring picture and sound in the local end.

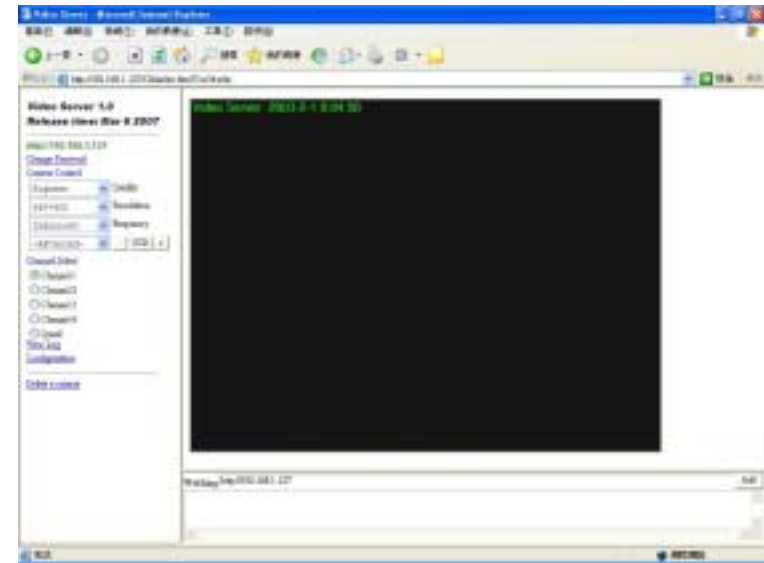
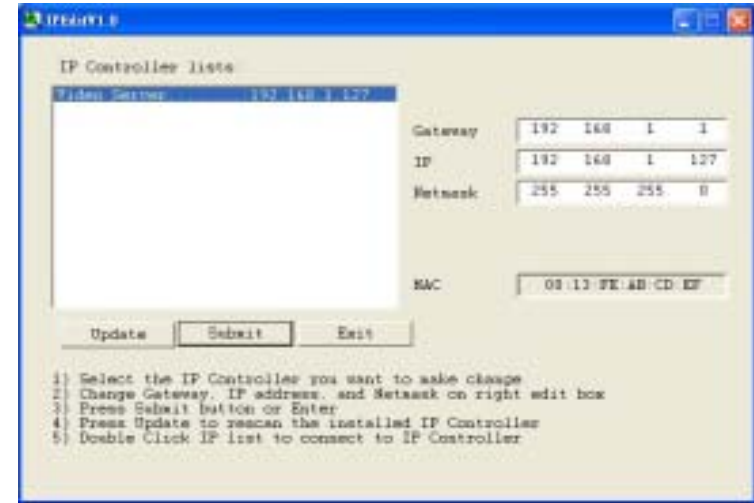


Step 4 : Plug RJ-45 Cable into your router, likes the following figure.



Step 5 : Execute the “ipEdit.exe” in the CD.“ and click “Update”.

http://192.168.1.127/” has been listed in the left side, and double click http://192.168.1.127/” to login the IP Video Server.



PS. Please refer to the manual in the CD ROM.