

Wireless Access Point

Quick Installation Guide

1 Connecting the Wireless Access Point

Prior to connecting the hardware, make sure to power off your Ethernet device and Wireless Access Point (AP). Then follow the steps below to connect the related devices.

- **Connect your computer to the LAN port.**

Attach one end of the Ethernet cable with RJ-45 connector to your hub, switch or a computer's Ethernet port, and the other end to one of the LAN ports of your AP.

- **Connect the power adapter.**

Connect the single DC output connector of the power adapter to the power jack on the side of the AP. Then plug the Power Adapter into an AC outlet.

- **Power on the following devices in this order:**

HUB or Switch, AP, and PCs

2 PC Setup

You can manage the AP through the Web browser-based configuration utility. To configure the device via Web browser, at least one properly configured computer must be connected to the device via Ethernet. The Access Point is configured with the default IP address of 192.168.1.1 and subnet mask of 255.255.255.0 and its DHCP server is enabled by default. Before setting up the AP, make sure your PCs are configured to obtain an IP (or TCP/IP) address automatically from the AP by the steps below.

2.1 Windows 2000

Please follow the steps below to setup your computer:

1. **Go to Start → Settings → Control Panel**

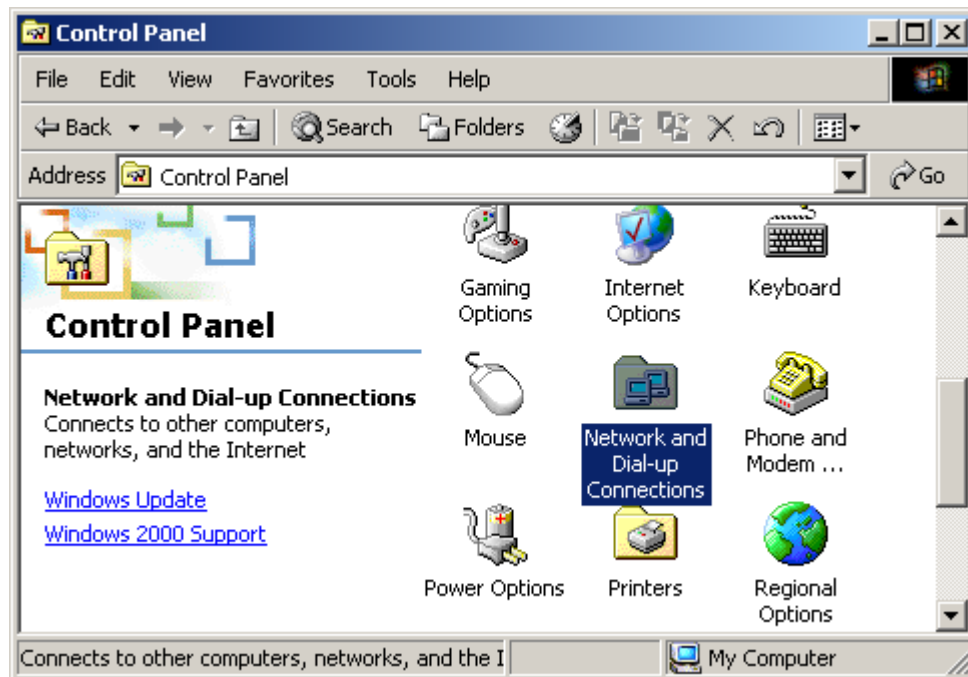


Figure 2-1

2. Double click the icon **Network and Dial-up Connections**
3. Highlight the icon **Local Area Connection**, right click your mouse, Click **Properties**

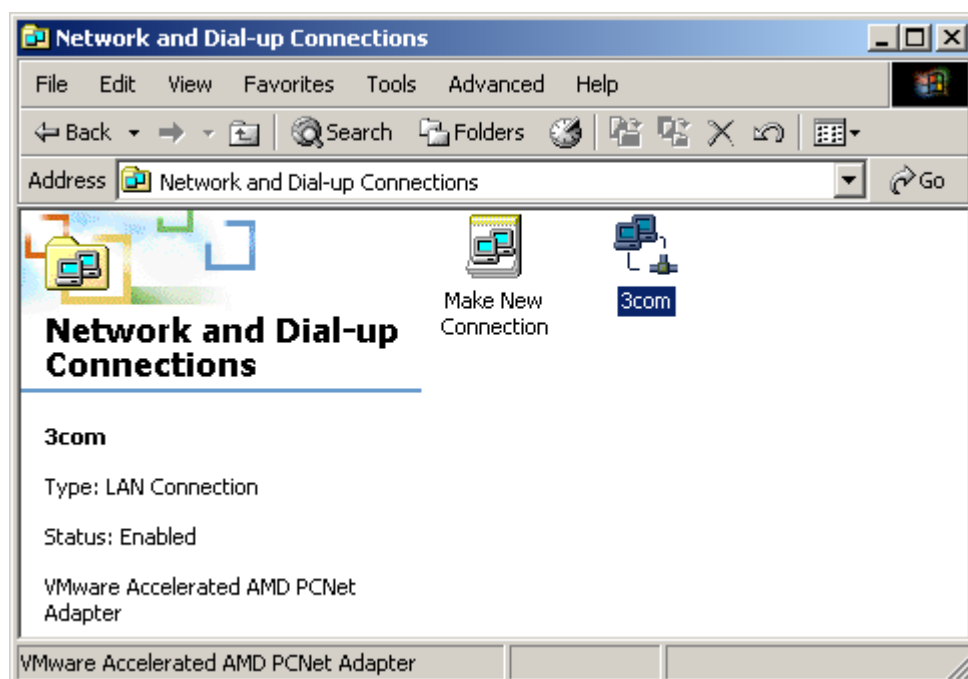


Figure 2-2

4. Highlight **Internet Protocol (TCP/IP)**, then press **Properties** button

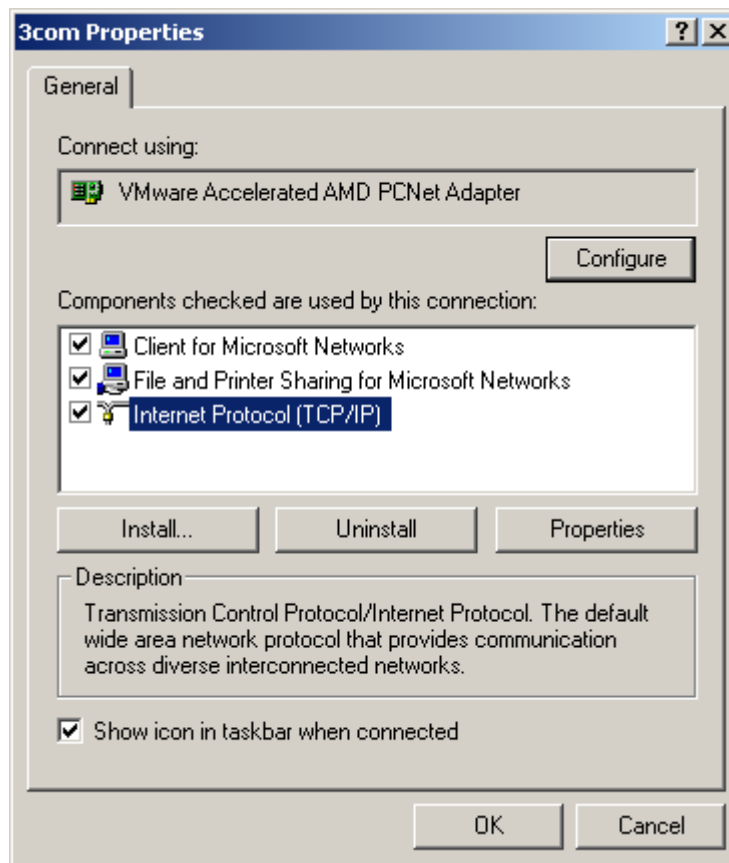


Figure 2-3

5. Choose Obtain an IP address automatically and Obtain DNS server address automatically, then press OK to close the Internet Protocol (TCP/IP) Properties window

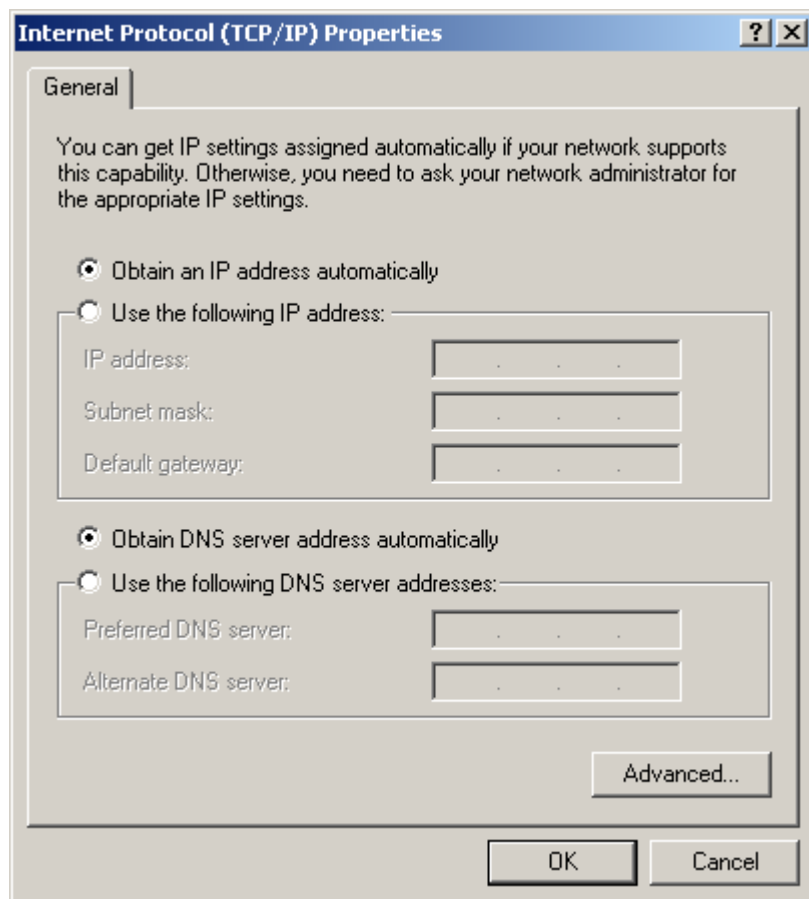


Figure 2-4

6. Press OK to close the Local Area Connection Properties window

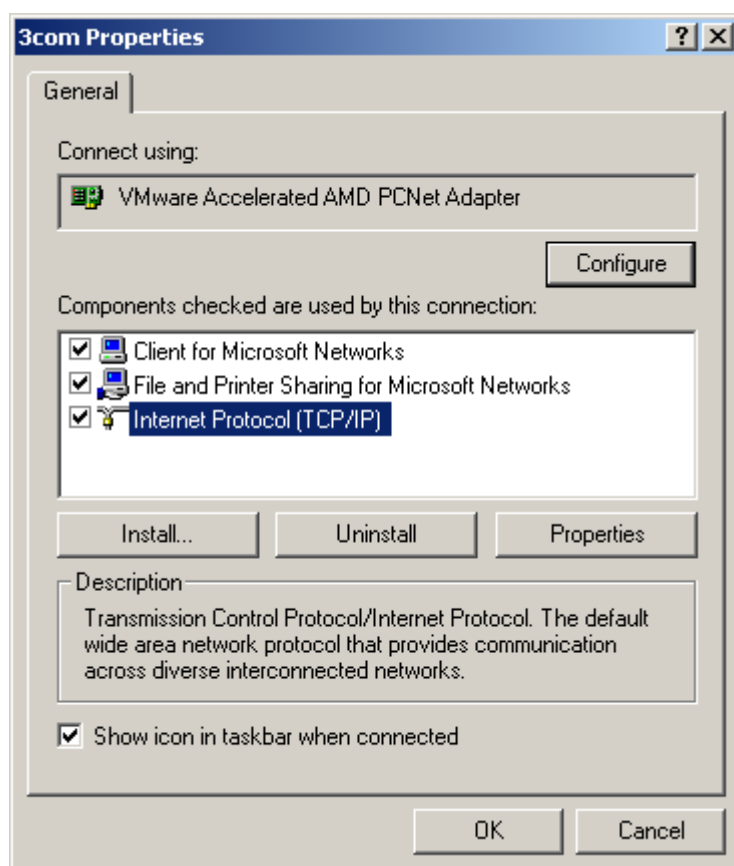


Figure 2-5

2.2 Windows XP/2003

Please follow the steps below to setup your computer:

1. Go to Start → Settings → Control Panel
2. Click Network and Internet Connections

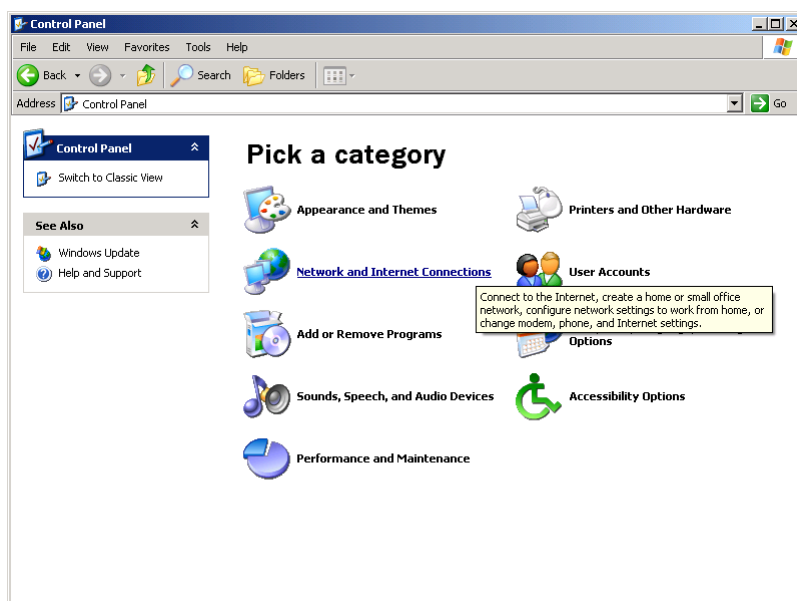


Figure 2-6

3. Click Network Connections

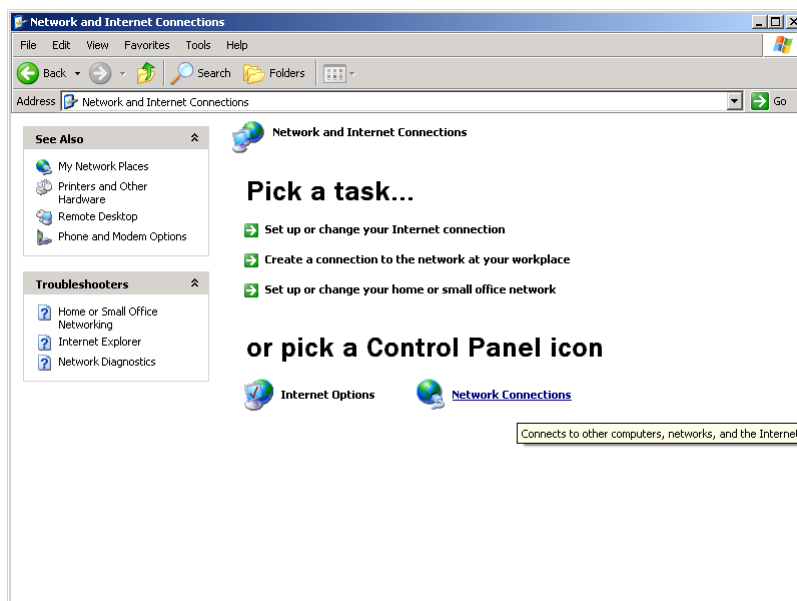


Figure 2-7

4. Highlight the icon Local Area Connection, right click your mouse, Click Properties

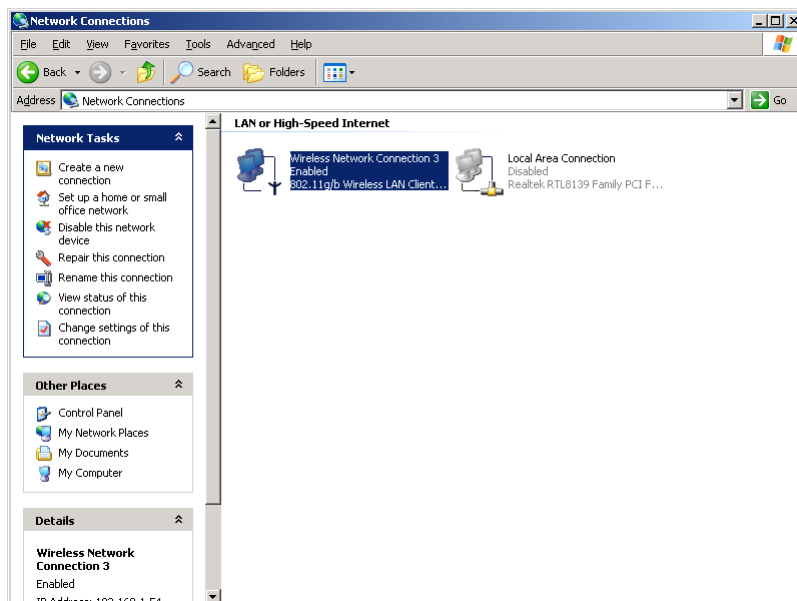


Figure 2-8

5. Highlight Internet Protocol (TCP/IP), then press Properties button

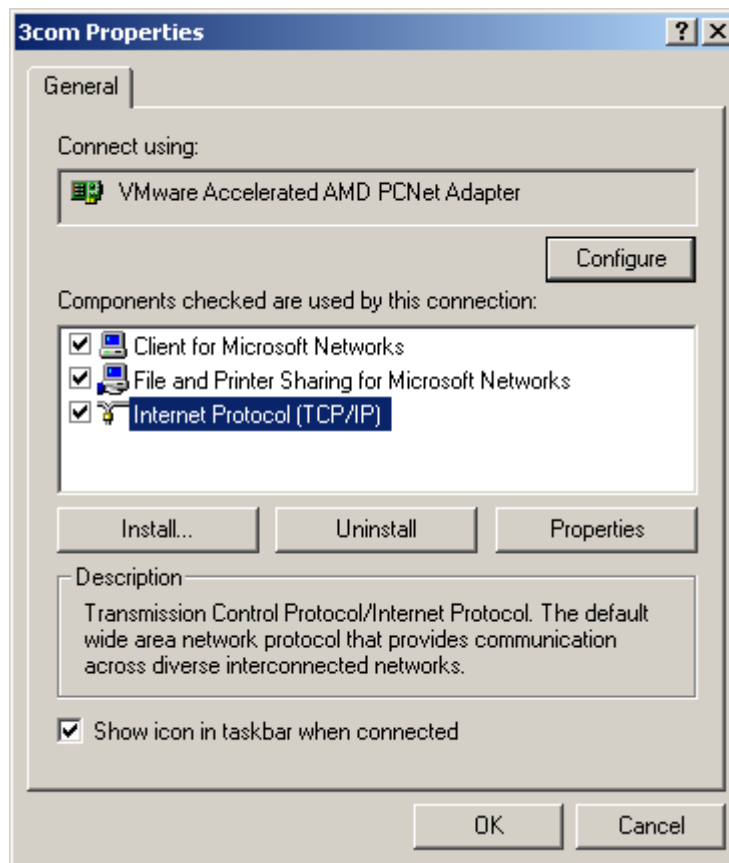


Figure 2-9

6. Choose Obtain an IP address automatically and Obtain DNS server address automatically, then press OK to close the Internet Protocol (TCP/IP) Properties window

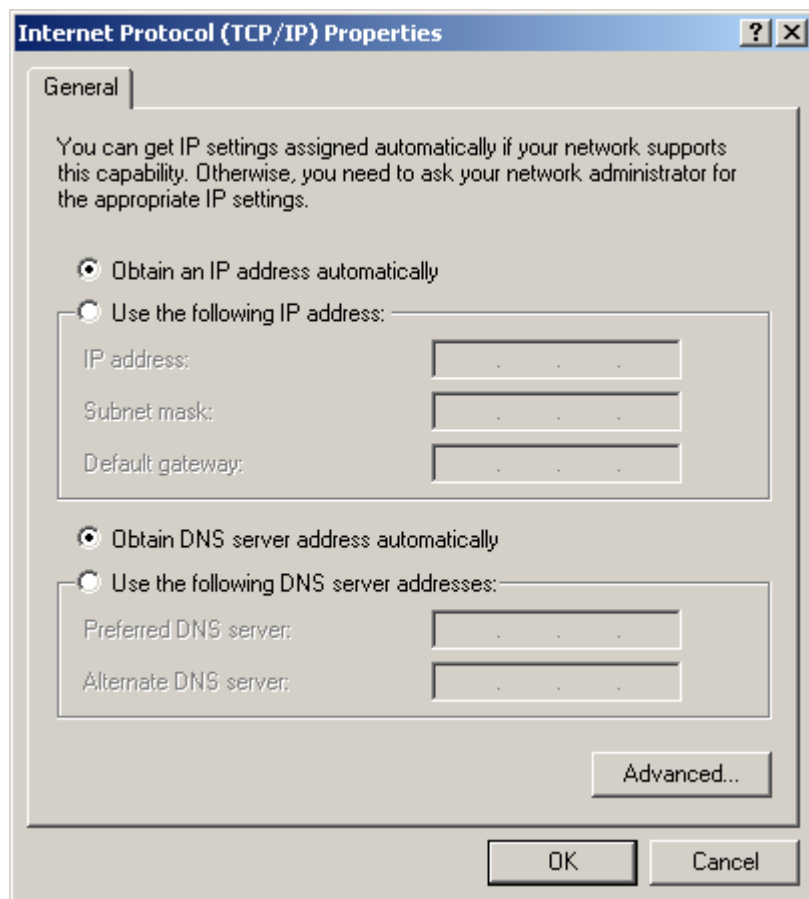


Figure 2-10

7. Press OK to close the Local Area Connection Properties window

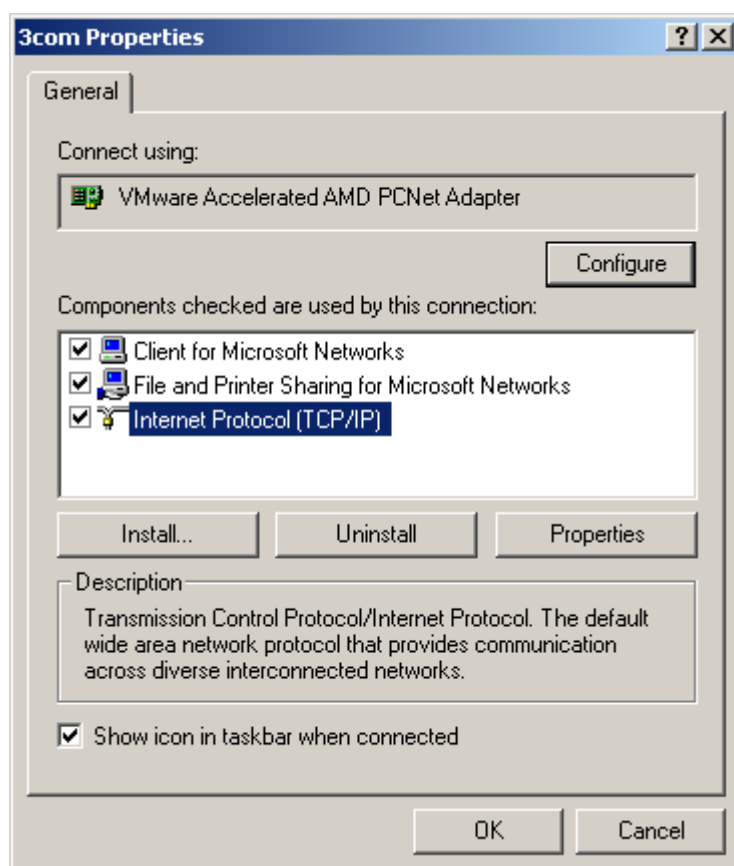


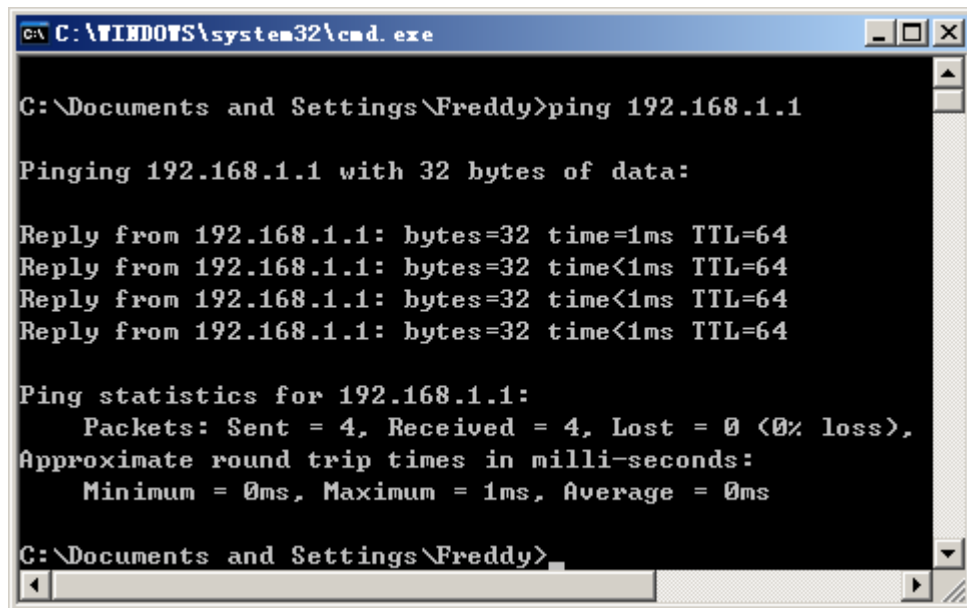
Figure 2-11

3 Connection the Wireless Access Point

After configuring the TCP/IP protocol, use the ping command to verify if the computer can communicate with the AP. To execute the ping command, open the DOS window and ping the IP address of the Access Point at the DOS prompt:

To execute ping command, open the DOS window by clicking on Start -> Run. In the Run window, type CMD. At the DOS prompt, type the following command:

If the Command window returns something similar to the following:



```
C:\WINDOWS\system32\cmd.exe

C:\Documents and Settings\Freddy>ping 192.168.1.1

Pinging 192.168.1.1 with 32 bytes of data:

Reply from 192.168.1.1: bytes=32 time=1ms TTL=64
Reply from 192.168.1.1: bytes=32 time<1ms TTL=64
Reply from 192.168.1.1: bytes=32 time<1ms TTL=64
Reply from 192.168.1.1: bytes=32 time<1ms TTL=64

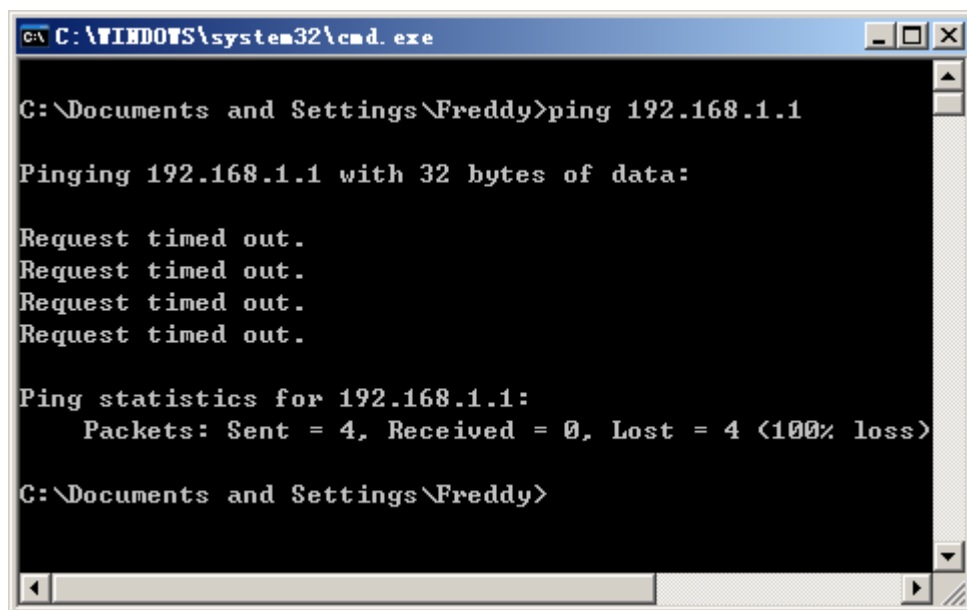
Ping statistics for 192.168.1.1:
    Packets: Sent = 4, Received = 4, Lost = 0 (0% loss),
    Approximate round trip times in milli-seconds:
        Minimum = 0ms, Maximum = 1ms, Average = 0ms

C:\Documents and Settings\Freddy>
```

Figure 3-1

Then the connection between the AP and your computer has been successfully established.

If the computer fails to connect to the AP, the Command window will return the following:



```
C:\WINDOWS\system32\cmd.exe

C:\Documents and Settings\Freddy>ping 192.168.1.1

Pinging 192.168.1.1 with 32 bytes of data:

Request timed out.
Request timed out.
Request timed out.
Request timed out.

Ping statistics for 192.168.1.1:
    Packets: Sent = 4, Received = 0, Lost = 4 (100% loss)

C:\Documents and Settings\Freddy>
```

Figure 3-2

Verify your computer's network settings are correct and check the cable connection between the AP and the computer.

4 Accessing the Web-Based Configuration Utility

- Launch the Web browser and type `http://192.168.1.1` in the Address field and click Enter.
- After connected to the device, you will be prompted to enter the username and password. Type **"guest"** in the User Name field, the default password is **"guest"**.

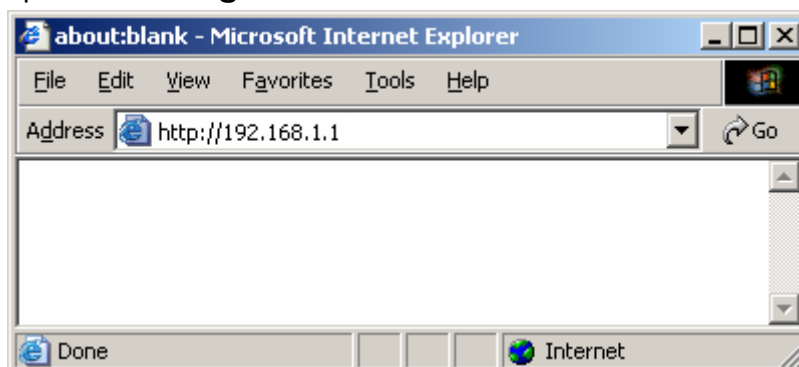


Figure 4-1

Congratulations! You've successfully configured your Wireless Access Point.