

- Applications -

LAN Access Point

This Network Access service provides handheld device to use the Ethernet connection via remote Bluetooth device. Those devices that offer Network Access service include Bluetooth computer with LAN connected or Stand alone Bluetooth Network access point.

Dial-Up Modem

Dial-Up Networking allows you to connect to Internet via a Bluetooth mobile phone or a Bluetooth modem. Once connected, you can browse the Internet, receive/send e-mail, etc.

Bluetooth ActiveSync

Bluetooth ActiveSync allows the handheld device synchronizes with desktop/laptop computer via wireless connection.

Bluetooth Serial Port

Bluetooth virtual serial port connection is identical to a physical cable serial port connection between two device.

File Transfer

The file transfer operation includes *Send*, *Create folder*, *Get file* and *Delete*. You may set local folder by this service as well.



BLUETAKE
Technology Co., Ltd.

Taiwan Headquarter

Tel: +886-2-2664-7199

E-mail: sales@bluetake.com

Hong Kong Branch

Tel: +852-9777-8785

E-mail: hk@bluetake.com

Japan Branch

Tel: +81-424-42-8268

E-mail: japan@bluetake.com

Mexico Branch

Tel: +52-55-5589-6954

E-mail: mexico@bluetake.com

Singapore Branch

Tel: +65-6743-2300

E-mail: spore@bluetake.com

USA Branch

Tel: +1-909-595-8160

E-mail: usa@bluetake.com

Quick Setup Guide

BT100

Bluetooth CF Card

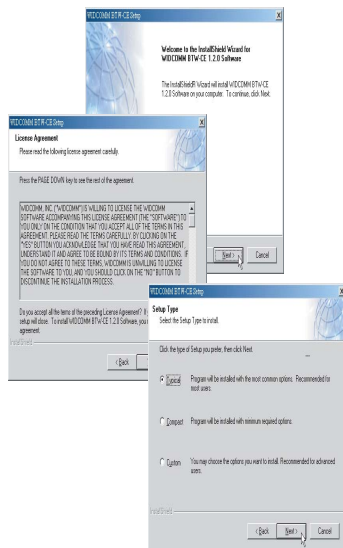


BLUETAKE
Technology Co., Ltd.

www.bluetake.com

- Hardware Setup -

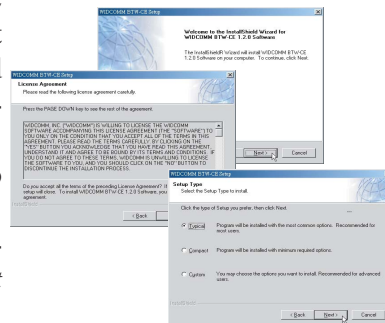
There's no any difficulty in inserting the BT100 *Bluetooth* CF Card into handheld device's CF card slot. Just insert the card into the slot and then turn on the handheld device. The BT100 will be activated as soon as the LED inside BT100 lightens.



Insert BT100 into your PDA's CF Card slot


- Software Setup -

1. **Make sure the BT100 *Bluetooth* CF card is plugged into handheld device's CF Card slot.**
2. Put the handheld device into its candle that has been connected to a computer.
3. Microsoft ActiveSync will automatically detect the handheld device and then establish a connection between them.
4. Insert the driver CD into the CD-ROM drive.
5. When the welcome window appears, click *Next* button to continue.
6. Click *Yes* button to accept the Licence Agreement and then follow the subsequent screens to install the software on the computer.
7. Reboot both of computer and handheld device after the installation is finished.



Example: Compaq iPAQ's reboot button.

- Using Bluetooth -

1. The *Bluetooth Manager* screen shows nothing when you open it from the *Programs* at the first time.
2. There are 2 ways to start search devices:
 - a) Click on **Connect!** from the **New** menu in the bottom.
 - b) Click on  icon.
3. In the *Connection Wizard* screen, highlight one service which you would like to use offers by remote device, and then click *Next* button.
4. Follow the instruction from the subsequent screens to look for some remote device.
5. When the search is finished, the device icon that you have chose will display in the *Bluetooth Manager* screen.

