

Our **BRICs LCD Series UPS Systems** mark a continuation in the tradition of excellence, our engineering team has achieved. They sacrifice neither features nor power to achieve their compact size, and mark the right choice for a Home or SOHO application environment. They are designed for customers who value versatility, manageability and performance on a stable platform.

These series have been developed on a **Line-Interactive, Energy-Saving** modern hardware platform designed to meet virtually all of today's **Home/SOHO** needs, thereby reducing your dependence on multiple systems. With 3-main battery & surge backed outlets as well as 3-surge backed outlets, enhanced safety features and a highly controlled operation, you can go ahead and connect onto them your most precious electronic devices and your emergency running systems, being ready in case of a power outage!

Unique features within these models make them easy to use and manage, protecting your investment for many years to come! From functionality down to aesthetic details, our **BRICs LCD Series** give an overall high-tech impression, and we are proud to recommend them to you!



Cable Collector



Battery Charger



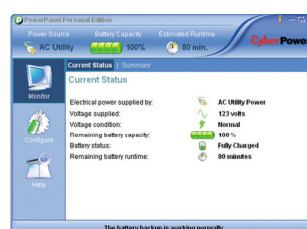
- Energy Saving System based on **GreenPower UPS™** Technology
- Line Interactive Technology & CPU based full Digital Control
- Automatic Voltage Regulator
- EMI, RFI, Surge & Lighting Spike Protection
- Phone, Fax, Modem, DSL, & Network Protection
- Elaborate Power Management Software Included
- We offer 25,000.- EUR Connected Equipment Life Time Guarantee
- Auto-Restart, Auto-Charge, & Scheduled Shutdown Function
- Horizontal or Wall-Mount Usage & Easy Serviceability
- Connection to PC via USB port
- Cable Management Included
- LCD-based multi-function Status Monitor
- Compact Design, High Reliability, Great Performance Output
- Battery Charger for (4 x AA) or (4 x AAA) type batteries



GreenPower UPS™

Up to 75% Electricity Saving!
 Nearly no Heat Generation
 Great Overall Energy Efficiency
 Lower TCO
 Longer Battery Life

PowerPanel® Personal Edition Management S/W



AUTO-SHUTDOWN SOFTWARE
 CyberPower PowerPanel® Personal Edition Management Software, is Compatible with Windows VISTA, XP, 2000 Pro., ME, 98, Windows Server 2003, Mac and Linux.

CAPACITY & RUN-TIME:

- **BRICs 450ELCD:** 450VA or 270W. **BRICs 650ELCD:** 650VA or 390W. **BRICs 850ELCD:** 850VA or 510W
- TYPICAL RUNTIME: **BRICs 450ELCD:** 14 min. **BRICs 650ELCD:** 24 min. **BRICs 850ELCD:** 35 min

LCD DISPLAY:

- Used to display detailed information on the UPS status, (Line / Battery Mode), and current power conditions.
- Displays 5 different Information blocks including: Output Voltage Level, Estimated Run-Time based on Actual Load, Load Capacity, Battery Capacity, and Input Voltage Level.

INPUT POWER:

- Voltage Range: 160V ~ 270V
- Frequency Range: 50Hz / 60 Hz (+/- 3Hz) auto-sensing

OUTPUT POWER:

- On Battery Output Voltage: Simulated Sine-Wave at 230V (+/- 10%)
- On Battery Output Frequency: 50Hz / 60 Hz (+/- 1%)
- Typical Transfer Time: 4ms
- Overload Protection Scheme: On Main Power by *Circuit Breaker*, and on Battery Power by *Internal Current Limiting*
- Automatic Voltage Regulator (AVR): Boost Only

BATTERY INFORMATION:

- Sealed Maintenance-Free Lead-Acid Batteries, Easily Replaceable by User
- **BRICs 450ELCD:** 12V, 4.5 AH x 1. **BRICs 650ELCD:** 12V, 7 AH x 1. **BRICs 850ELCD:** 12V, 8.5 AH x 1
- Typical Recharge Time: 8 Hours

STATUS INDICATORS:

- Multi-function LCD Display
- Power-On LED
- Audio Alarms for: Overload, On-Battery, and Low-Battery

RECEPTACLES:

- Six Plugs (Schuko or other types): Three for Battery Backup & Surge, and Three only for Surge Protection
- RJ11/RJ45 Input/Output for Surge Protection

CONNECTORS:

- USB Connector to PC
- Battery Charger Connector and holding panel for 4 x AAA or 4 x AA re-chargeable batteries; (*batteries not included*)

MANAGEMENT & CONTROL:

- Manual Self-Test
- Auto Re-Charge
- Auto Re-Start
- Scheduled Shutdown Function
- Power Panel® Personal Edition elaborate software for PC connectivity and Management Control
- Cable Management/Collector build-in

PHYSICAL INFORMATION:

Dimensions: 271 (L) x 160.7 (W) x 113.6 (H) mm
Weight: **BRICs 450ELCD:** 4.4kg. **BRICs 650ELCD:** 5.5kg. **BRICs 850ELCD:** 6.4kg
Storage Temperature: -15°C ~ +45°C
Operating Temperature: 0°C ~ 40°C
Operating Humidity: 0%~95% non-condensed



DISTRIBUTED BY:

CyberPower's
Manufacturing
Facilities are
ISO 9001:2000,
ISO 14000, and
QC080000
Approved